



Printer driver user guide for

- **REINER jetStamp 1025**
- **REINER jetStamp graphic 970**
 - **REINER 940**

Version 7.0.05.9700

949014-000-E

© 2013 Ernst Reiner GmbH & Co. KG

All rights reserved. Translations, reprints, or any other form of reproduction of this manual, even in part and regardless of form, require our prior, express written permission.

We reserve the right to change the contents of this manual without prior notice.

This manual has been compiled with great care, however we cannot accept liability for any errors or defects or for damage resulting from them

Ernst Reiner GmbH & Co. KG

Postfach 1351

D-78115 Furtwangen

Tel. (0) 7723/657-0

Fax (0) 7723/657200

E-Mail: reiner@reiner.de

Internet: <http://www.reiner.de>

Table of contents

1. Introduction	4
2. System requirements (Hardware/Software)	4
3. Supported REINER Marker	4
4. Basics about the supported REINER Marker	5
5. Install printer driver	6
6. Generals about printer driver	18
a. Prepare printer and check status of print job.....	18
b. Basic settings (Printing preferences).....	20
c. Basic settings (Printer properties).....	22
7. Use printer driver as Standard Windows printer driver	24
a. Printing with Notepad.....	25
b. Printing with Windows Photo Viewer	26
c. Printing with Excel.....	27
d. Printing with WordPad	30
e. Printing with Word	33
f. Printing with IrfanView.....	37
g. Printing with SAP	38
8. Use printer driver with extended functions	39
a. Create and print simple Label.....	39
b. Create and print difficult label with Counter, Date/Time and variable Barcode.....	43

1. Introduction

This manual is a description of a uniform software interface for the REINER Marker family

2. System requirements (Hardware/Software)

For operation of the marker the following hardware is needed:

- PC with 32-Bit (x86) or 64-Bit (x64) processor
- 1 GB RAM or more (32 Bit) or 2 GB RAM or more (64 Bit)
- Interface
 - **USB 1.1** or
 - **USB 2.0** (recommended)
 - **USB 3.0** (with USB 2.0 transfer rate)
 - **Bluetooth**
- On this PC the following software must be installed:
 - Microsoft Windows 7
 - Microsoft Windows 7 (64bit)
 - Microsoft Windows 8
 - Microsoft Windows 8 (64bit)
 - Microsoft Windows 8.1
 - Microsoft Windows 8.1 (64bit)
 - Microsoft Windows 10
 - Microsoft Windows 10 (64bit)
 - Microsoft Windows 11 (64bit)

3. Supported REINER Marker

- REINER jetStamp® 940
- REINER jetStamp® 970
- REINER jetStamp® 1025
- REINER jetStamp® 1025 sense

4. Basics about the supported REINER Marker

REINER jetStamp® 1025:

Resolution: 300dpi
Width (x): 1004 pixel | 85mm | 3.34 inch
Height (y): 308 pixel | 25.4mm | 1 inch

REINER jetStamp® 970:

Resolution: 300dpi
Width (x): 767 pixel | 64.9mm | 2.55 inch
Height (y): 160 pixel | 13.5mm | 0.53 inch

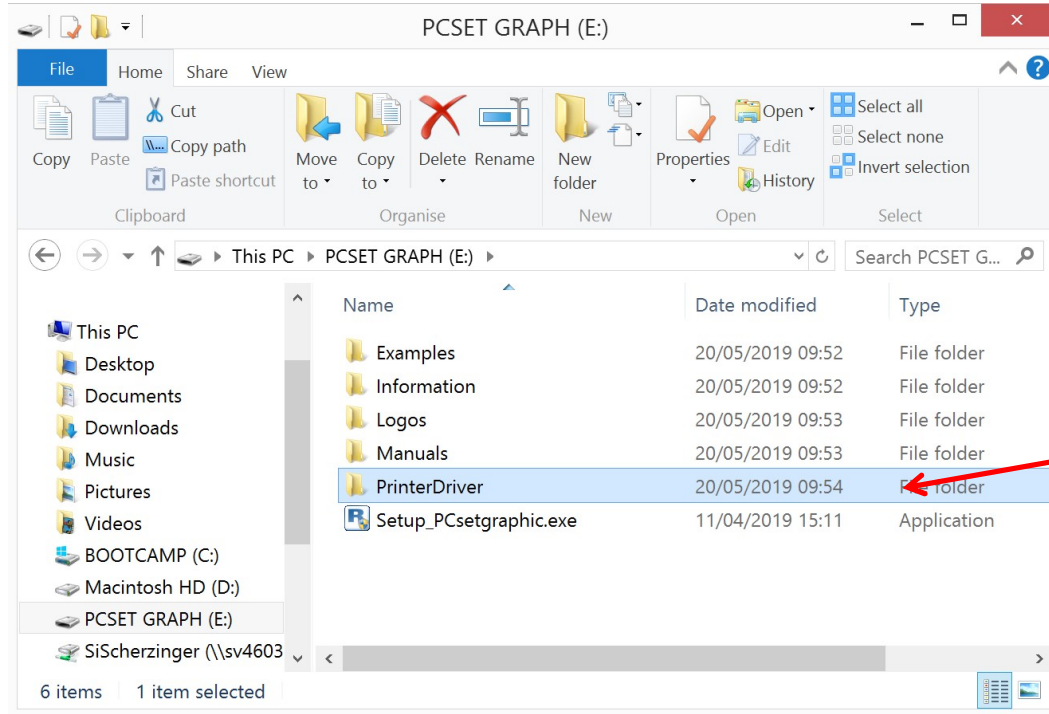
REINER jetStamp® 940:

Resolution: 300dpi
Width (x): 1653 pixel | 139,95mm | 5.51 inch
Height (y): 160 pixel | 13.5mm | 0.53 inch

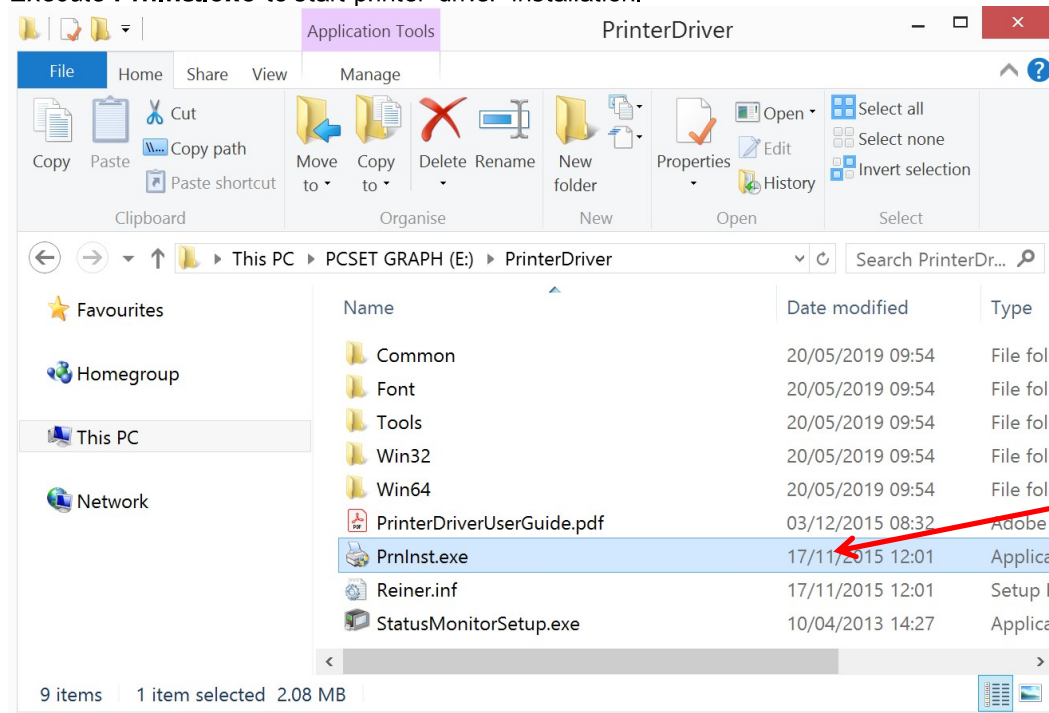
5. Install printer driver

Printer driver will be delivered via PCset graphic.

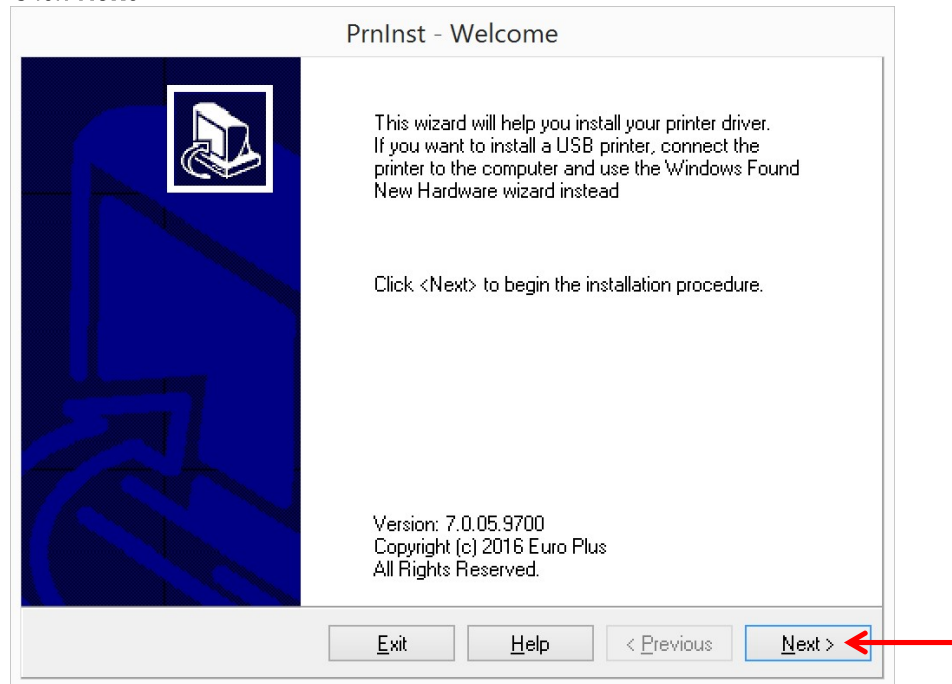
Printer driver is stored on installation medium in folder **PrinterDriver**.



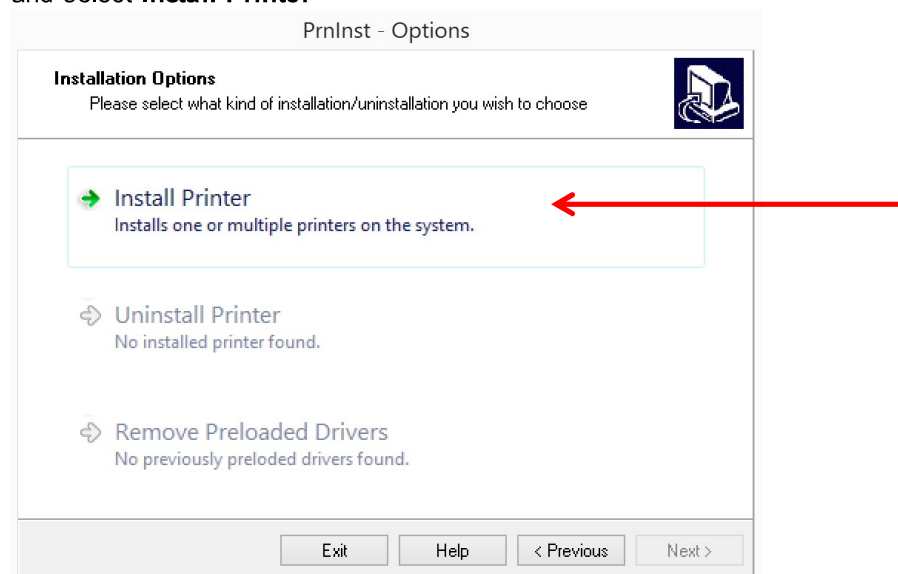
Execute **PnnInst.exe** to start printer driver installation.



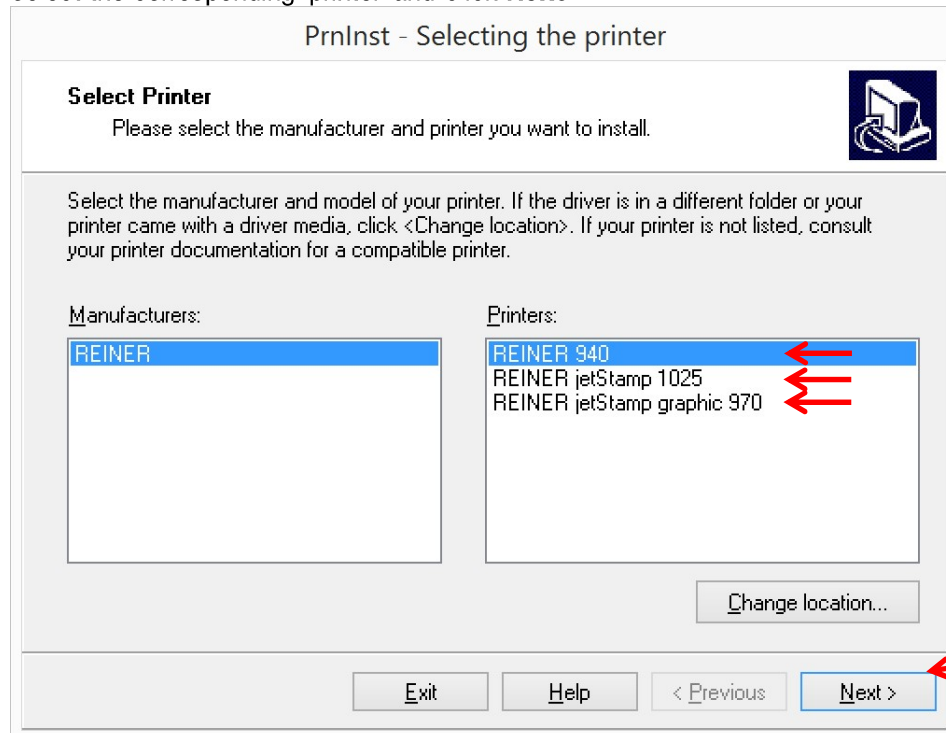
Click **Next >**



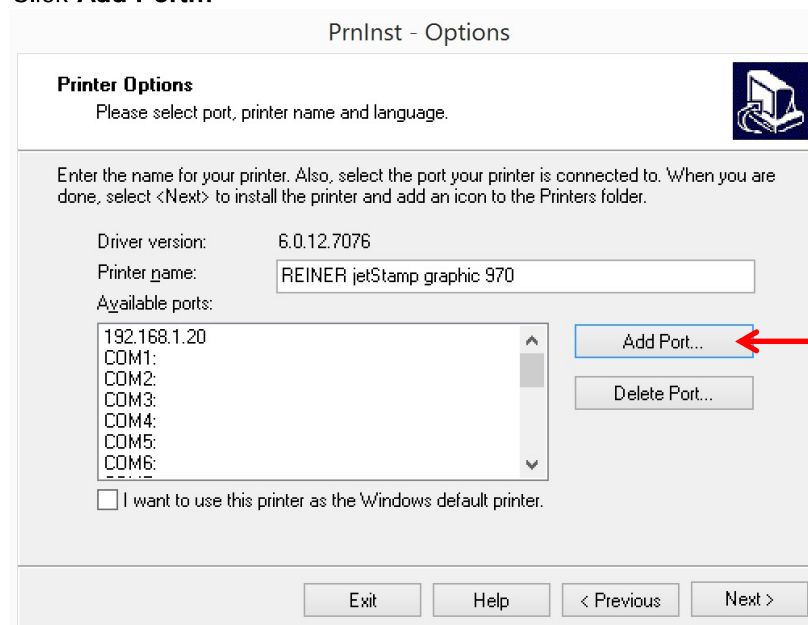
and select **Install Printer**



select the corresponding printer and click **Next >**

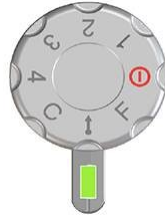


Click **Add Port...**



and select the **communication typ** and select **Next >**.

Important: In case of device REINER 940 or jetStamp graphic 970, switch on the device by turning the set wheel of REINER device to position Online/Bluetooth.



In case of USB

PrnInst - Add New Port

Add Port
Please select a port type to install a new port

To install new port on your system first select a suitable port type. In case of Bluetooth port please check if your device is correctly paired.

☒ USB
☐ Bluetooth

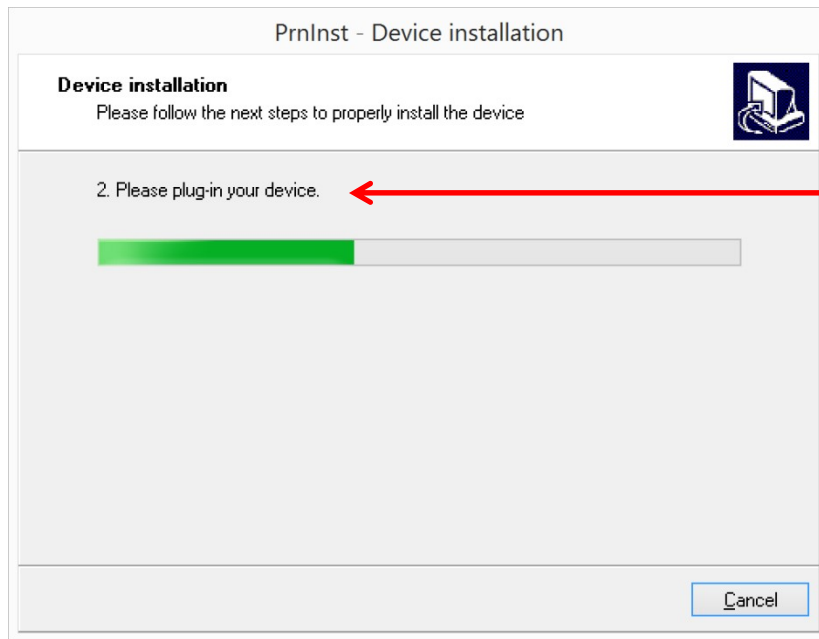
Next >

PrnInst - Device installation

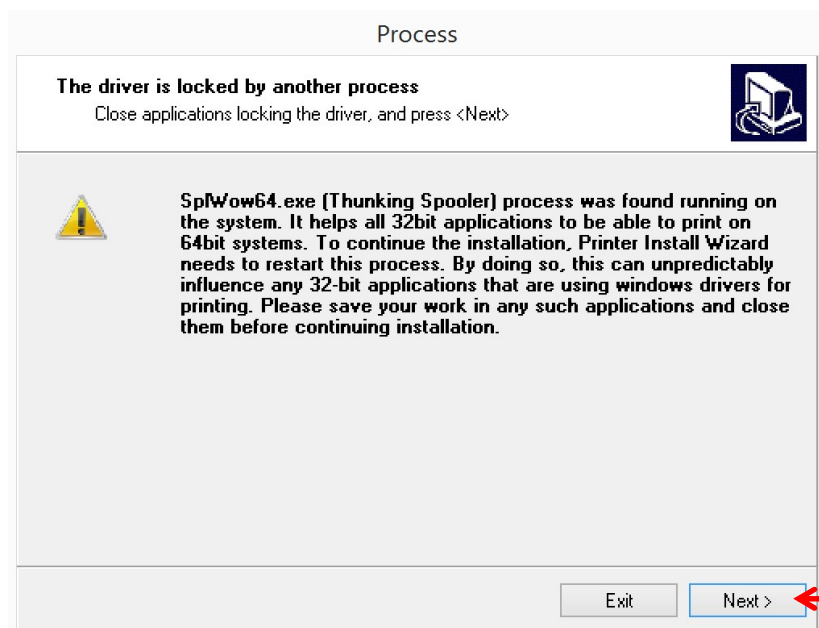
Device installation
Please follow the next steps to properly install the device

1. Please unplug your device or press "Next >" if the device is already unplugged.

Next >



Click **Next >** if the following dialog will be displayed.



If jetStamp graphic 970 is connected

Check if correct device is selected.

Check if Communication channel is USB.

After that, expand the name by serial number.

REINER Port Monitor

Port name

Name: REINER_ 970_000117

Choose device

Detected device: REINER_970_000117

Communication channel: USB

Action: Search for devices

Device information

Bluetooth address: /

Model: 970

Serial number: 000117

Searching for devices

OK Cancel

If jetStamp 1025 is connected

REINER Port Monitor

Port name

Name: REINER_ 1030_000001

Choose device

Detected device: REINER_1030_000001

Communication channel: USB

Action: Search for devices

Device information

Bluetooth address: /

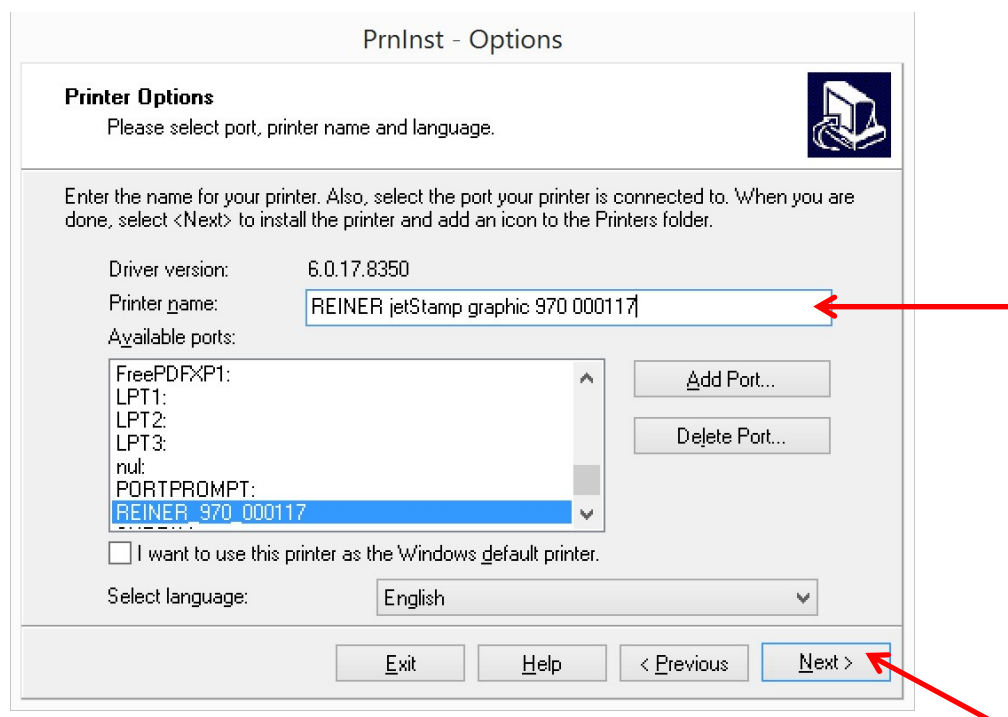
Model: 1030

Serial number: 000001

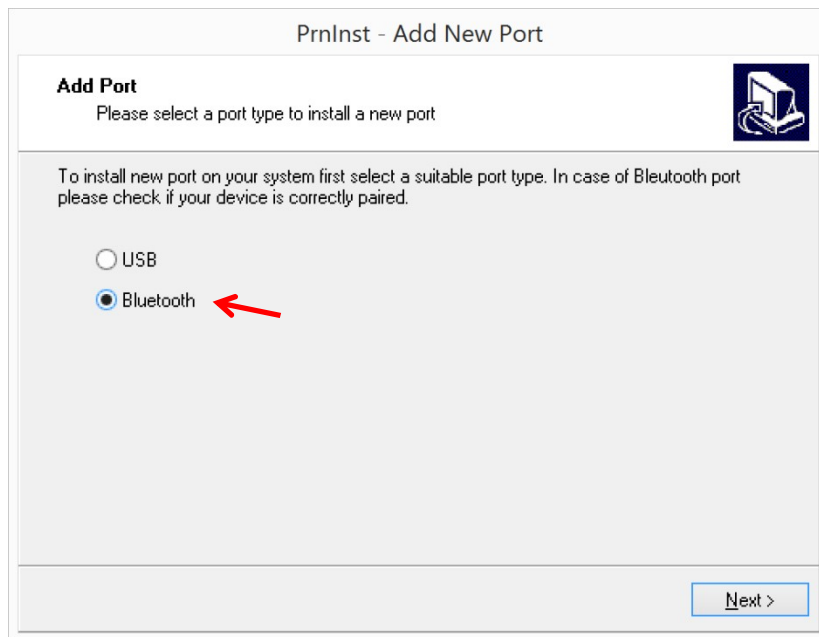
Searching for devices

OK Cancel

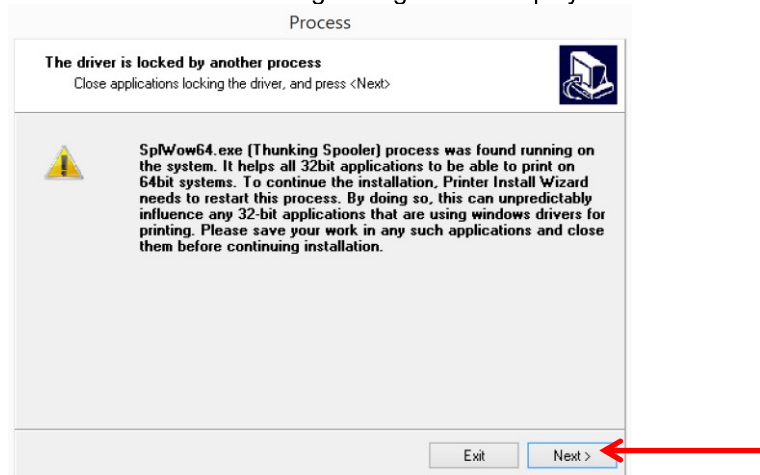
After adding the port, expand also the Printer name by serial number and press **Next >**



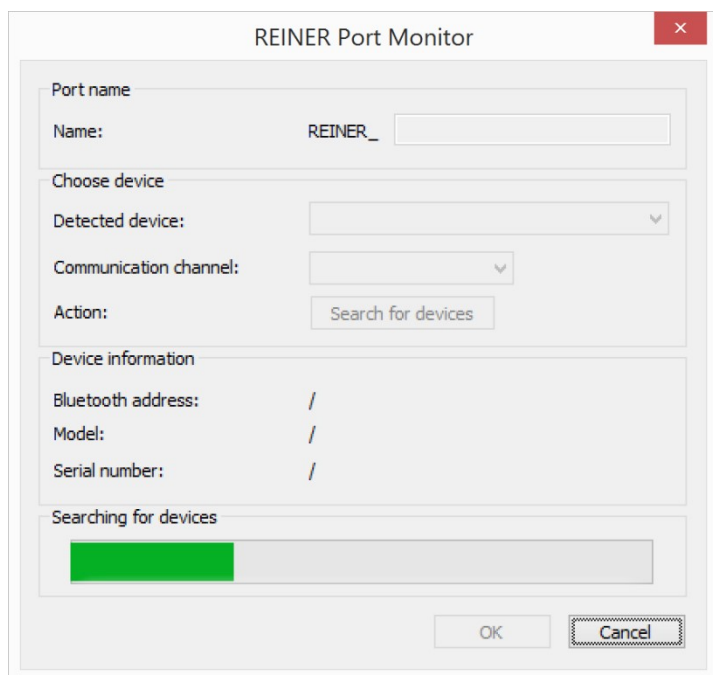
In case of Bluetooth



Click **Next >** if the following dialog will be displayed.



Printer driver is searching after available REINER devices.



REINER Port Monitor

Port name

Name: REINER_

Choose device

Detected device:

Communication channel:

Action: Search for devices

Device information

Bluetooth address: /

Model: /

Serial number: /

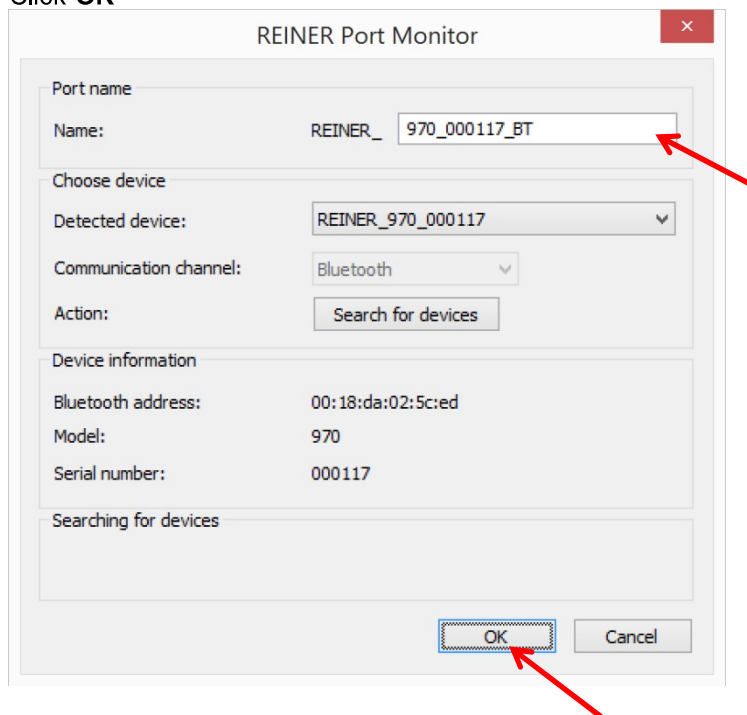
Searching for devices

OK Cancel

If found, expand the name by serial number as shown below.

If jetStamp graphic 970 is connected

Click **OK**



REINER Port Monitor

Port name

Name: REINER_ 970_000117_BT

Choose device

Detected device: REINER_970_000117

Communication channel: Bluetooth

Action: Search for devices

Device information

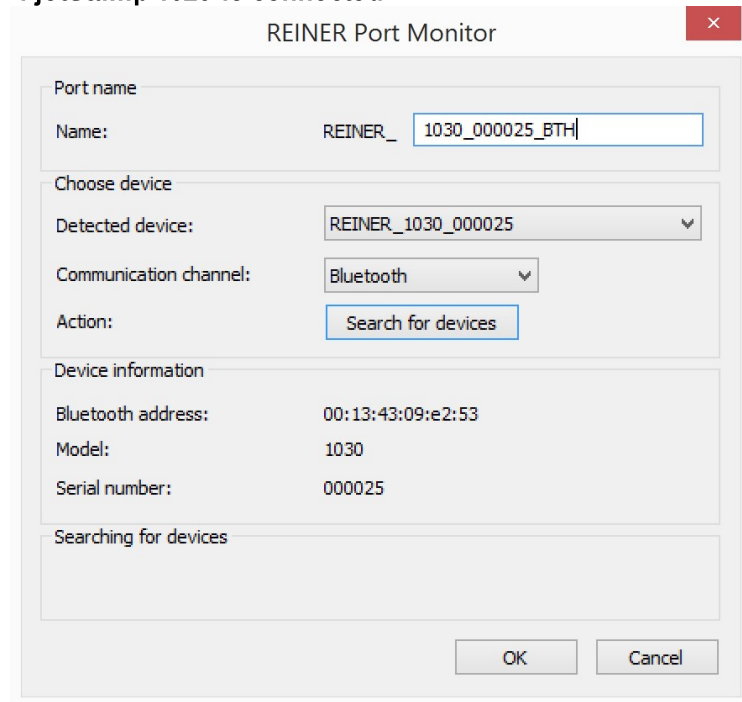
Bluetooth address: 00:18:da:02:5c:ed

Model: 970

Serial number: 000117

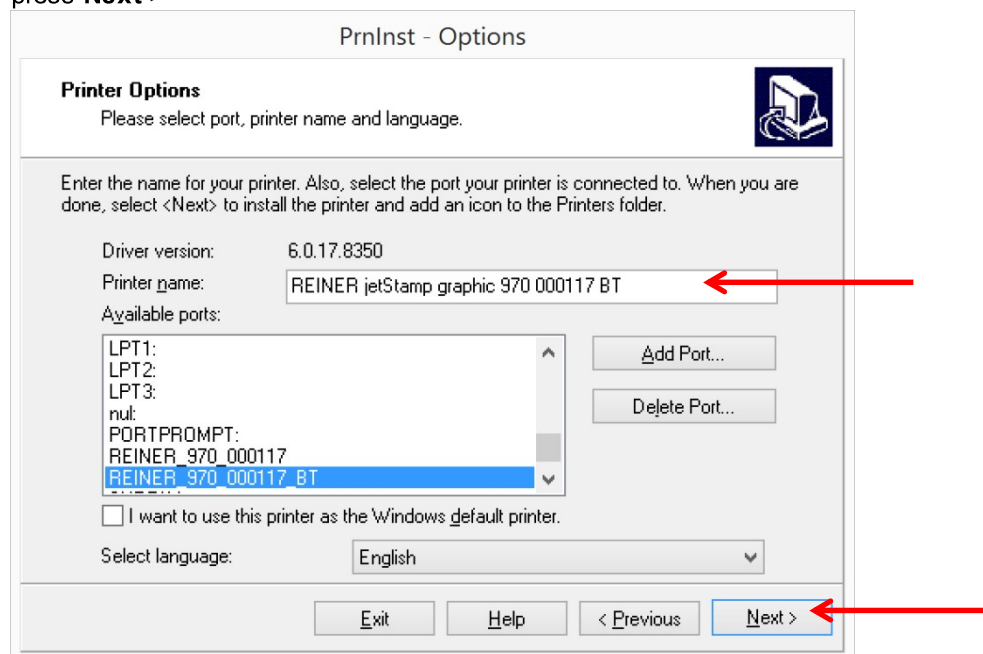
Searching for devices

OK Cancel

If jetStamp 1025 is connected

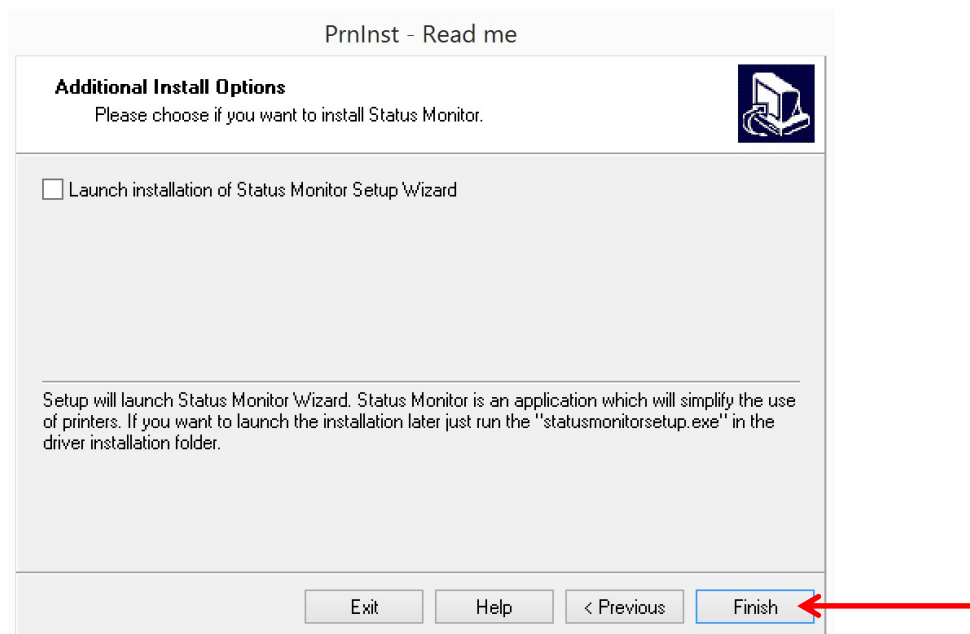
The REINER Port Monitor dialog box is shown. It has a title bar with a close button. The dialog is divided into several sections: 'Port name' with a 'Name:' label and a text box containing 'REINER_1030_000025_BTH'; 'Choose device' with a 'Detected device:' dropdown showing 'REINER_1030_000025' and a 'Communication channel:' dropdown showing 'Bluetooth', along with a 'Search for devices' button; 'Device information' with fields for 'Bluetooth address:' (00:13:43:09:e2:53), 'Model:' (1030), and 'Serial number:' (000025); and a 'Searching for devices' section. At the bottom are 'OK' and 'Cancel' buttons.

After adding the port, expand also the Printer name by serial number and by BT for Bluetooth and press **Next >**

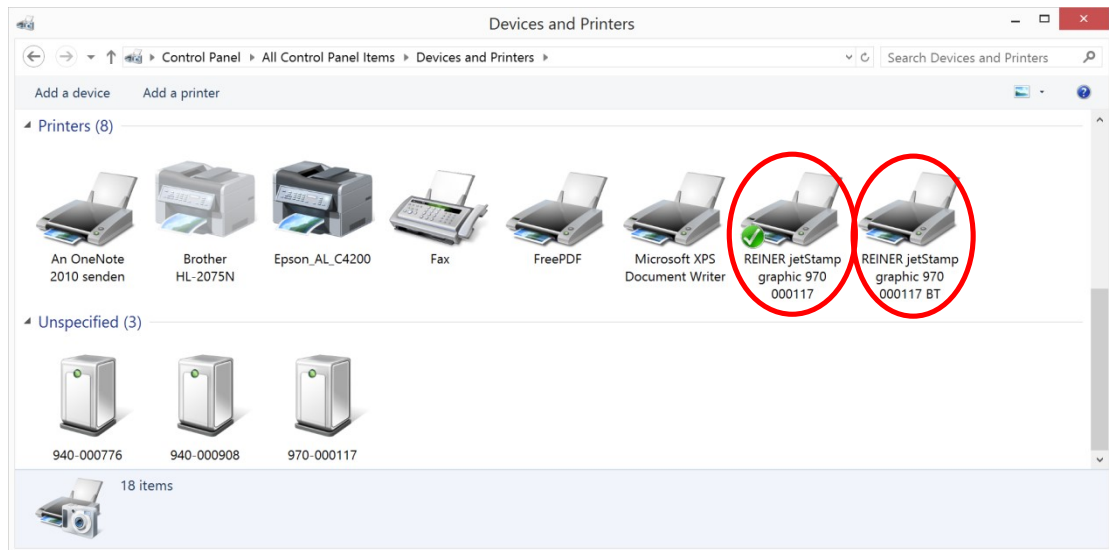


The PrnInst - Options dialog box is shown. It has a title bar and a 'Printer Options' section with a printer icon. The text says: 'Please select port, printer name and language.' Below this, it says: 'Enter the name for your printer. Also, select the port your printer is connected to. When you are done, select <Next> to install the printer and add an icon to the Printers folder.' The 'Driver version:' is 6.0.17.8350. The 'Printer name:' text box contains 'REINER jetStamp graphic 970 000117 BT' and is pointed to by a red arrow. The 'Available ports:' list shows 'REINER_970_000117_BT' selected. To the right of the list are 'Add Port...' and 'Delete Port...' buttons. Below the list is a checkbox 'I want to use this printer as the Windows default printer.' and a 'Select language:' dropdown set to 'English'. At the bottom are 'Exit', 'Help', '< Previous', and 'Next >' buttons, with the 'Next >' button pointed to by a red arrow.

and finish installation by clicking **Finish**



After successful installation the printer driver should be displayed as printer device on page **Devices and Printers**



6. Generals about printer driver

Note: Each REINER printer needs its own printer driver. It isn't possible to use more REINER printer with just one printer driver. The pairing will be done over serial number.

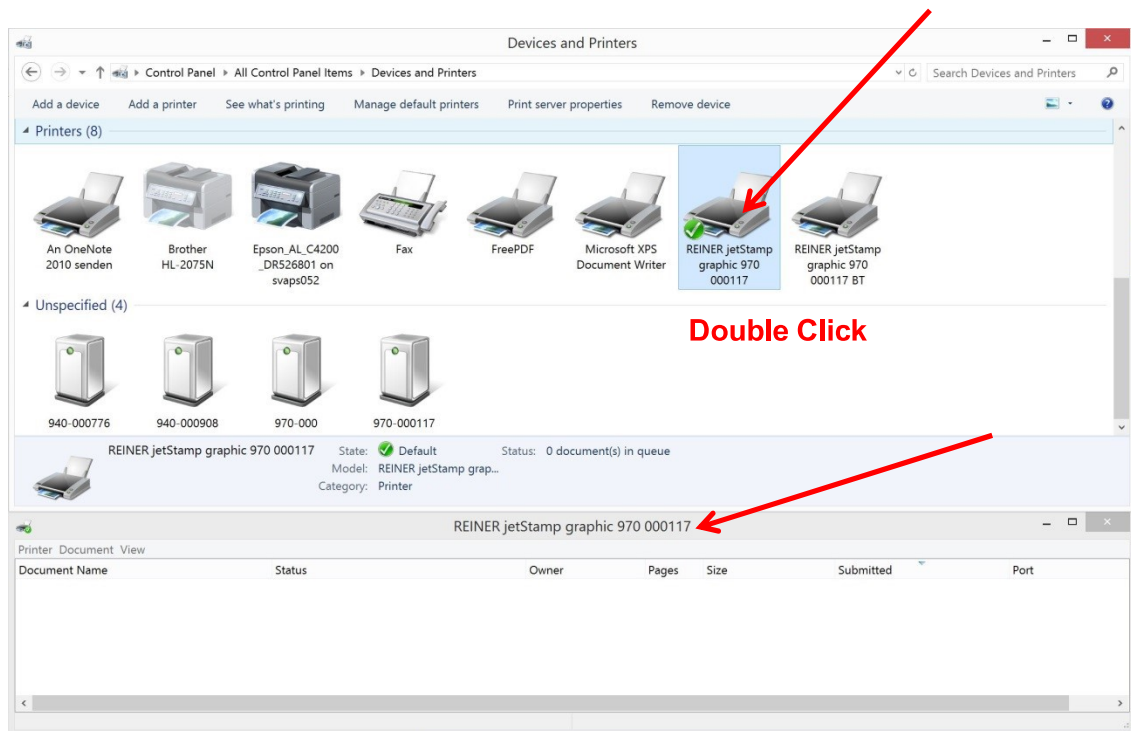
Note: Printer driver operation can be disturbed by PCset graphic. Therefore keep PCset graphic closed during printer driver operation.

a. Prepare printer and check status of print job

- To send print data to device set wheel must be in position Online/Bluetooth. In case of **REINER 940** device, closure lever must also be released.



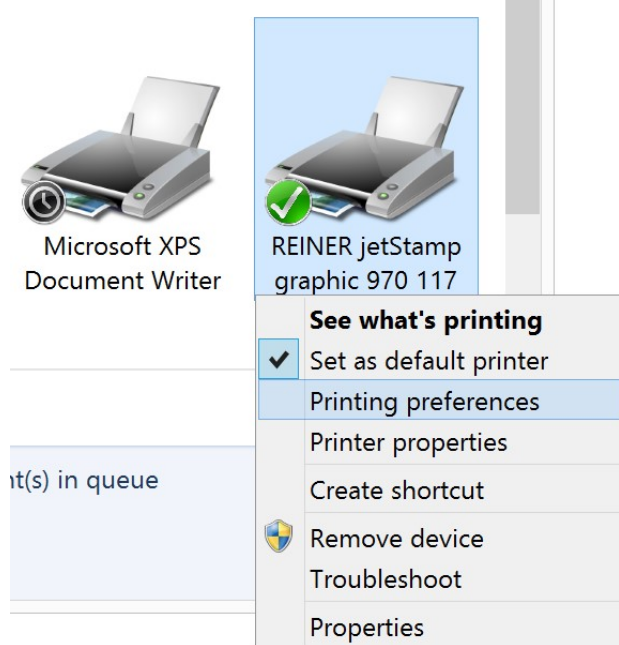
- When print job is successful sent to device, print job is listed in printer queue as long as print job isn't printed. Printer queue can be found by double clicking printer symbol in **Devices and Printers**

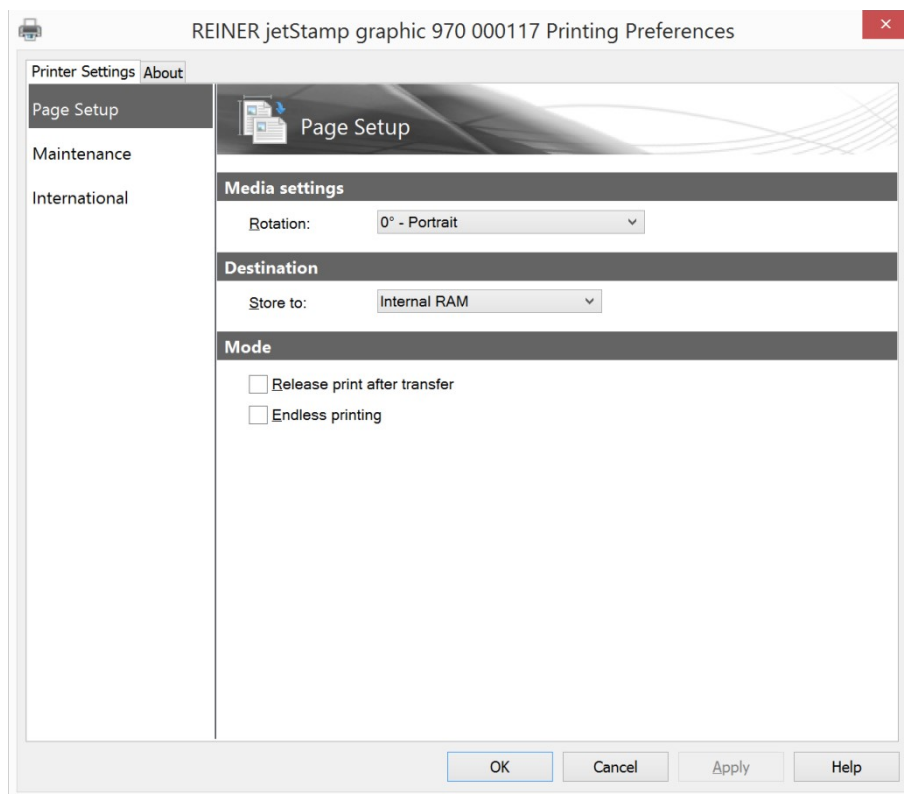


b. Basic settings (Printing preferences)

User can do user-defined settings of printer driver after installation.

To open the Printer preferences open in Windows the page **Devices and Printers** and right click onto the REINER device printer symbol and select **Printing preferences**.





Destination → Store to:

Internal RAM used when printer will be taken as desktop printer.
Print data are available as long as set wheel of device is in Online position.
Supports faster data transfer.

To printed the print data turn set wheel of device in Online position.

Internal FLASH used when printer will be taken as mobile printer, without frequently data transfer. Supports device internal functions like date/time, counter and variable barcode.
Print data will be stored in non-volatile memory in device. Print data are available after switching off/on device.
Supports slower data transfer than to internal RAM.
To print the print data turn set wheel of device to position 1.

Mode → Release print after transfer:

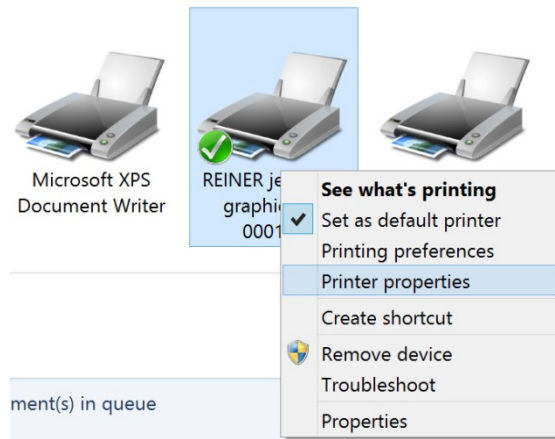
Printer will do a printout when print data are successfully received on device. Works only if **Internal RAM** is selected and device is on paper.

Mode → Endless printing:

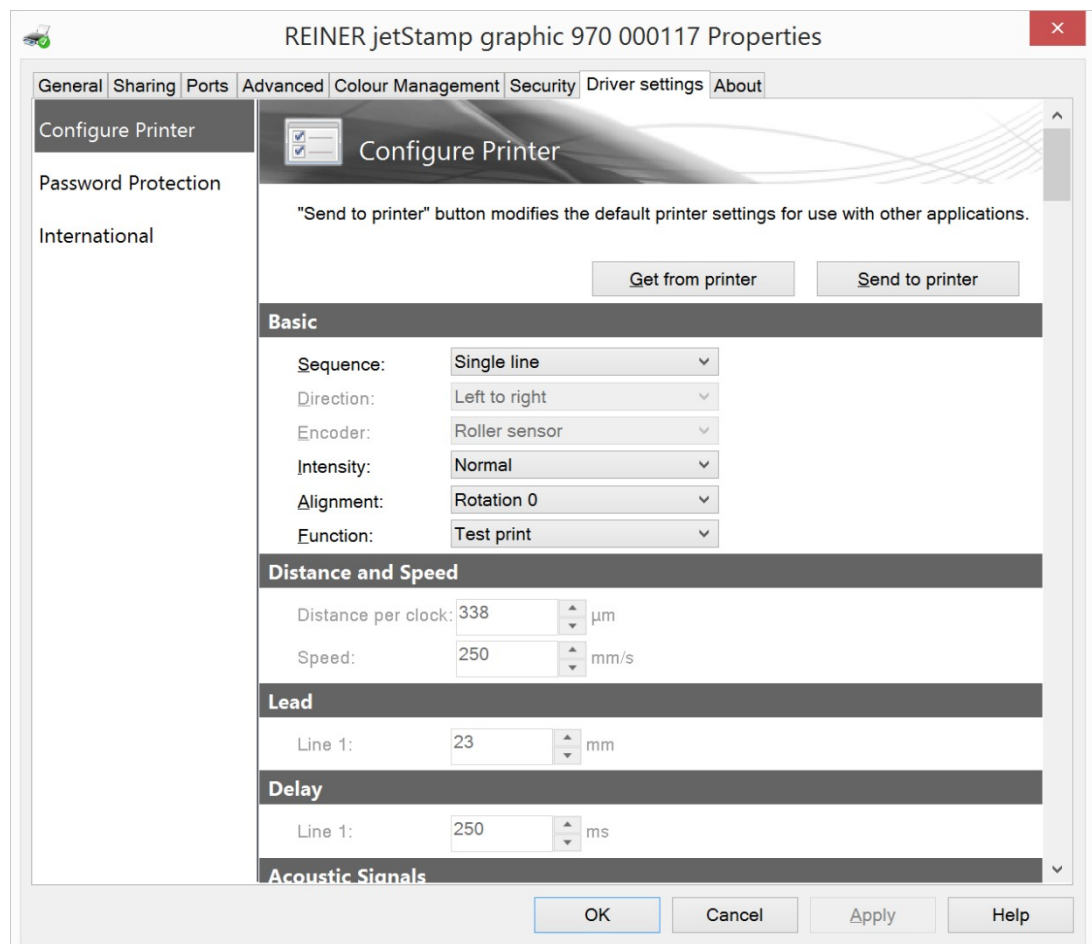
The last transmitted print job can be endless printed. As long as a new print job will be sent. Has only effect if **Internal RAM** is selected.

c. Basic settings (Printer properties)

To open the Printer properties open in Windows the page **Devices and Printers** and right click onto the REINER device printer symbol and select **Printing properties**.

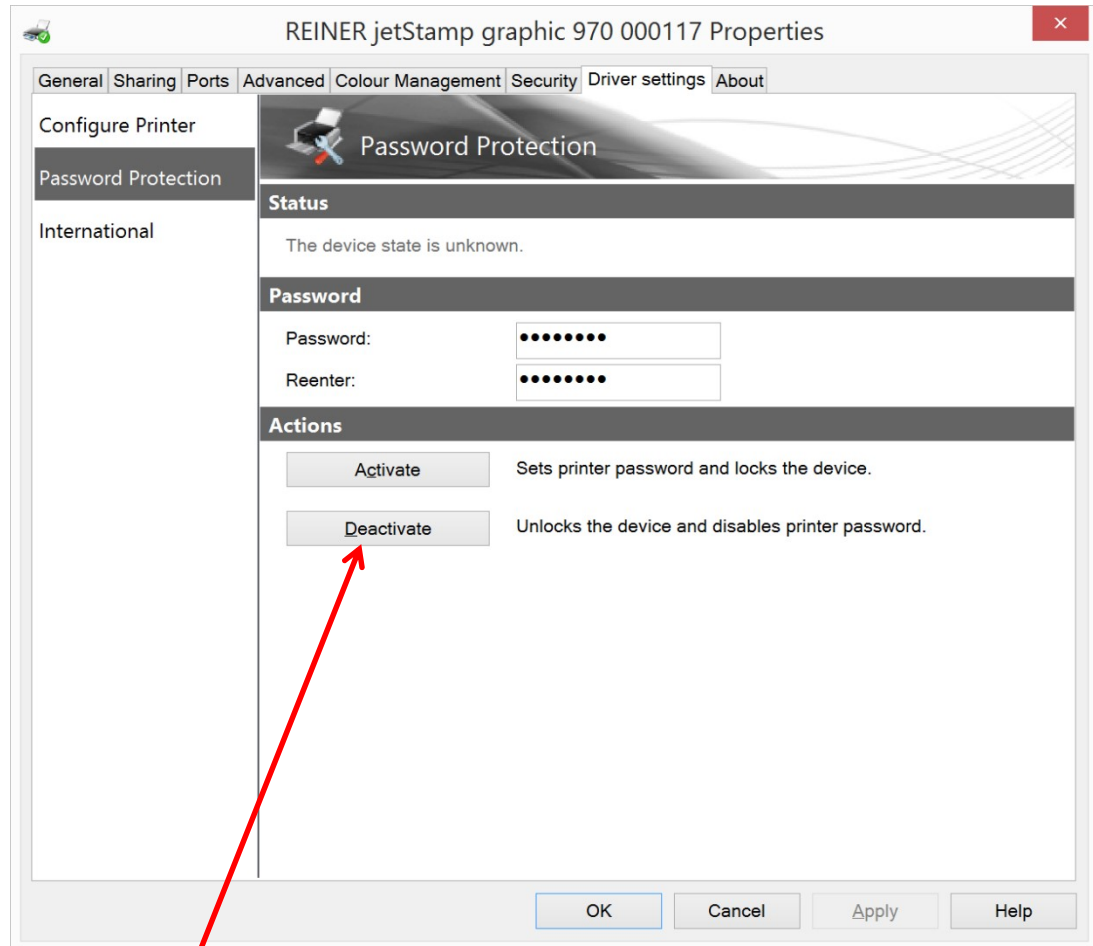


Select the property sheet **Driver settings**



IMPORTANT: To set and get printer properties, use the buttons **Get from printer** and **Send to printer**.

For description of settings parameter take help of PCset graphic chapter
The Software Application PCst graphic → Operating Interface → Device settings → Print settings.

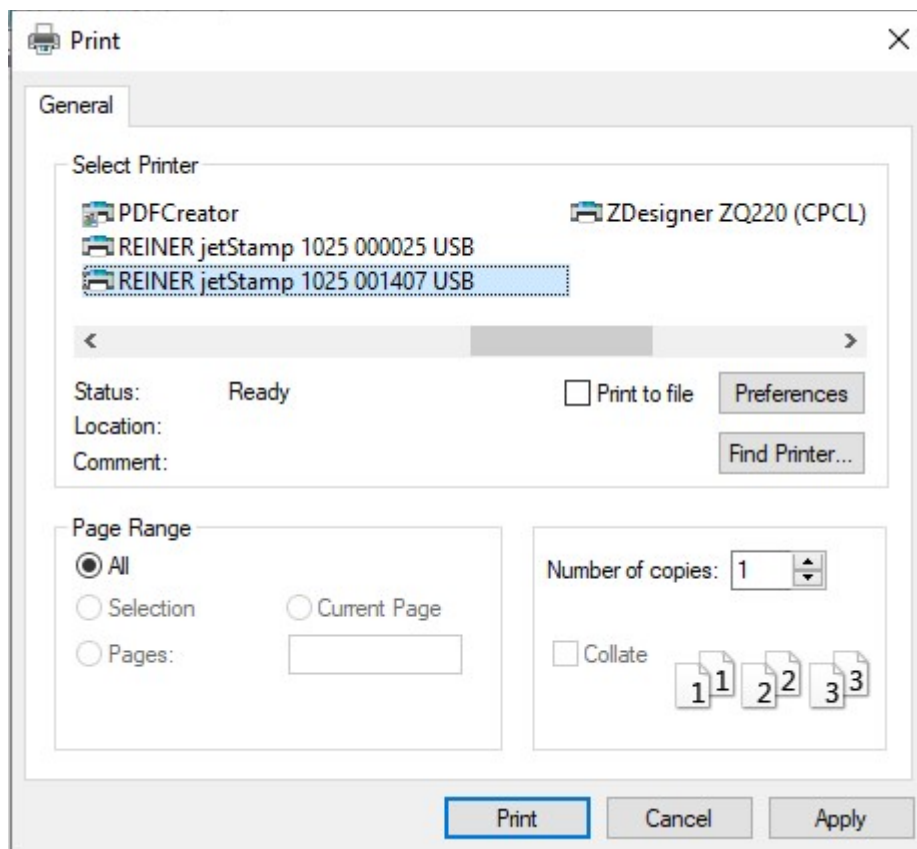
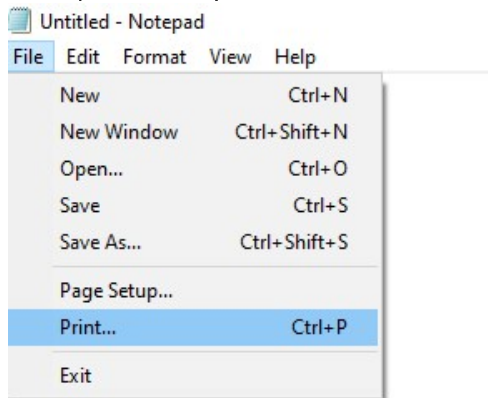


Password protection settings of device.
In some cases device can be password protected. To Deactivate password protection, click **Deactivate**

7. Use printer driver as Standard Windows printer driver

The best and easiest way to synchronize the REINER printer driver with the application used is to connect the REINER jetStamp with the application at the beginning. With this method, the application knows the printer properties and then reacts to the printer properties when the page is set up. If the REINER jetStamp is your default printer everything is prepared without changes are required.

Example for Notepad:

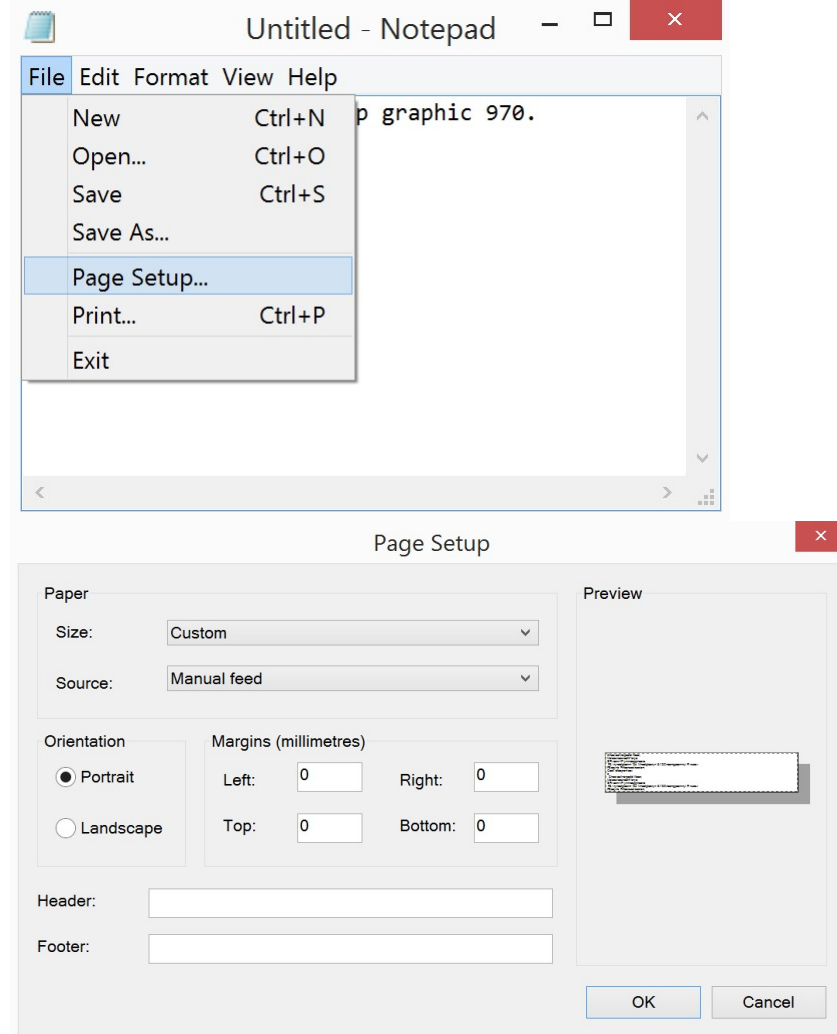


Choose the REINER jetStamp, click "Apply" and afterwards "Cancel"

For all the other applications like Word, Excel etc. it works similar.

a. Printing with Notepad

In Notepad, write a text to print. After that, setup the page as follow:

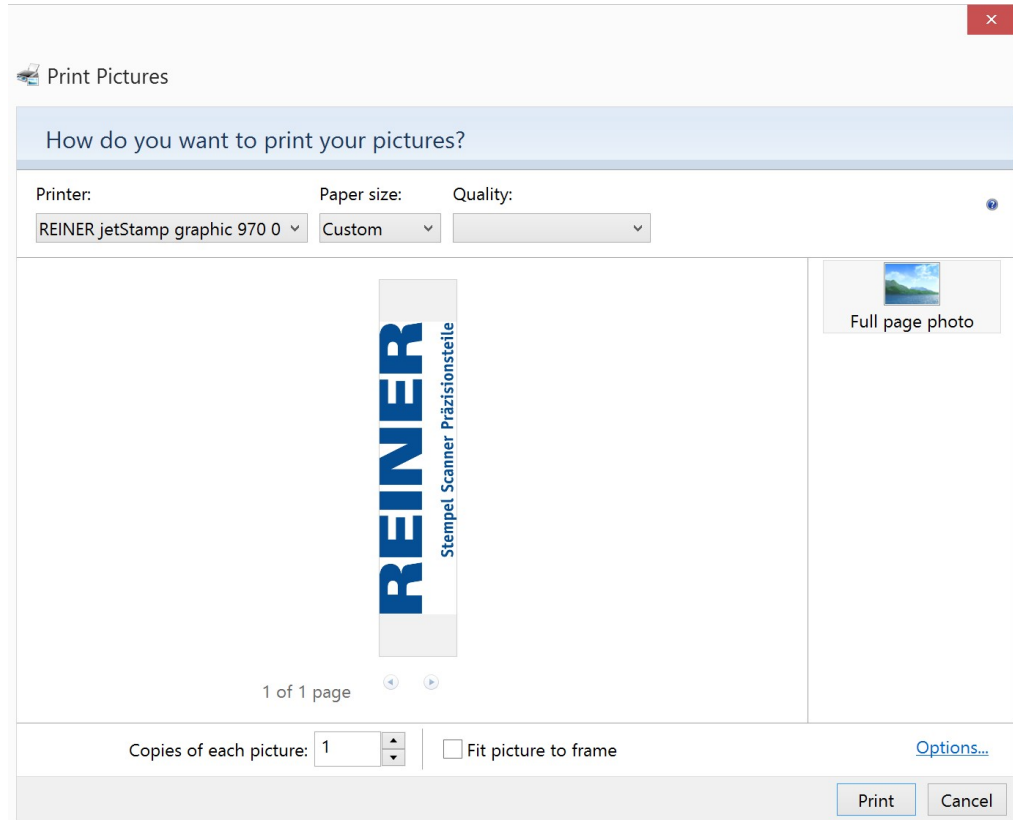


To use the full print area of the REINER jetStamp you must set the Margins to 0. If you are using margins be aware that the summary of them are not bigger than the print area.

To print the text, go to File → Print → Select REINER Printer and click button "Print".

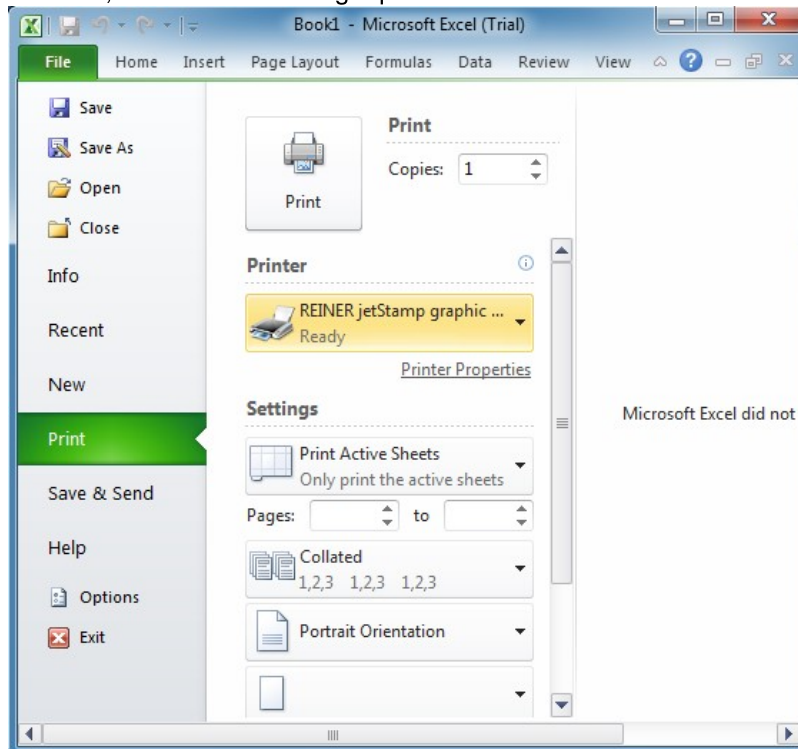
b. Printing with Windows Photo Viewer

Open a picture with Windows Photo Viewer. Go to "Print" → "Print ...", select REINER Printer and maybe uncheck option "Fit picture to frame", then press button "Print".

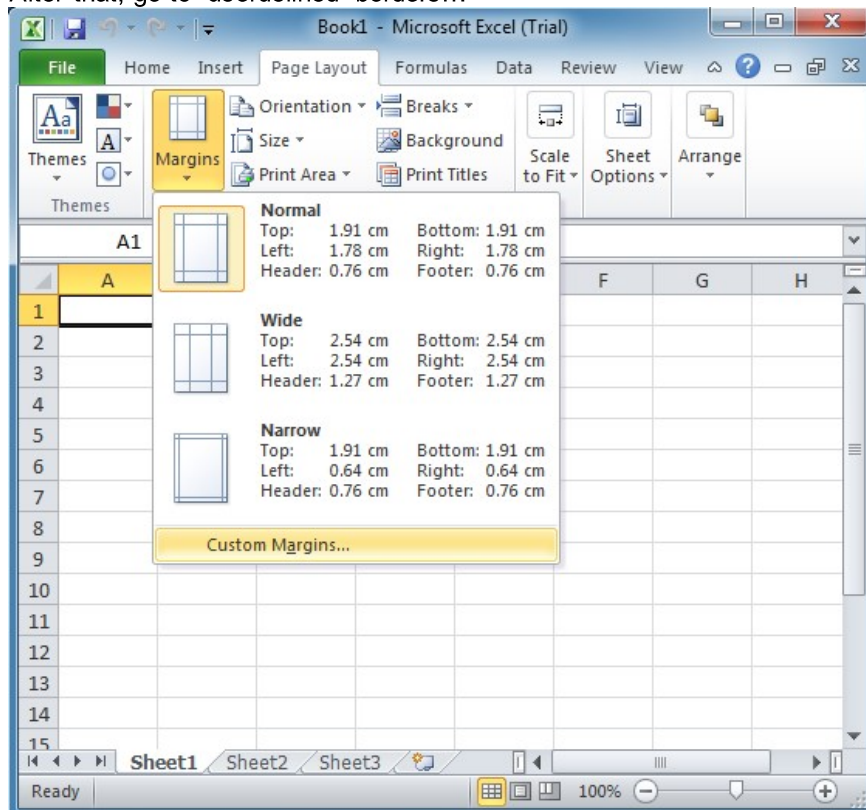


c. Printing with Excel

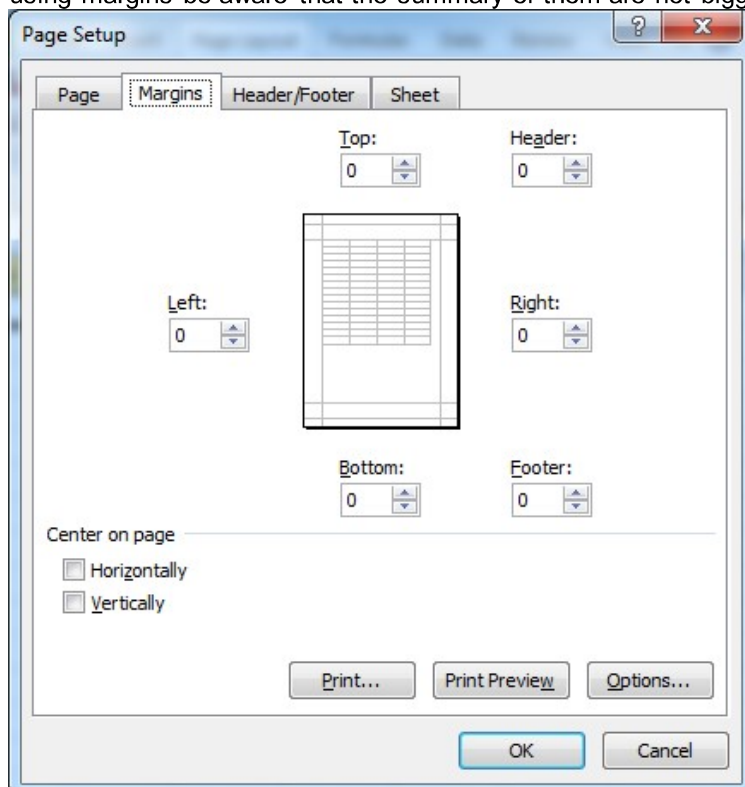
In Excel, at first select the right printer as follow:



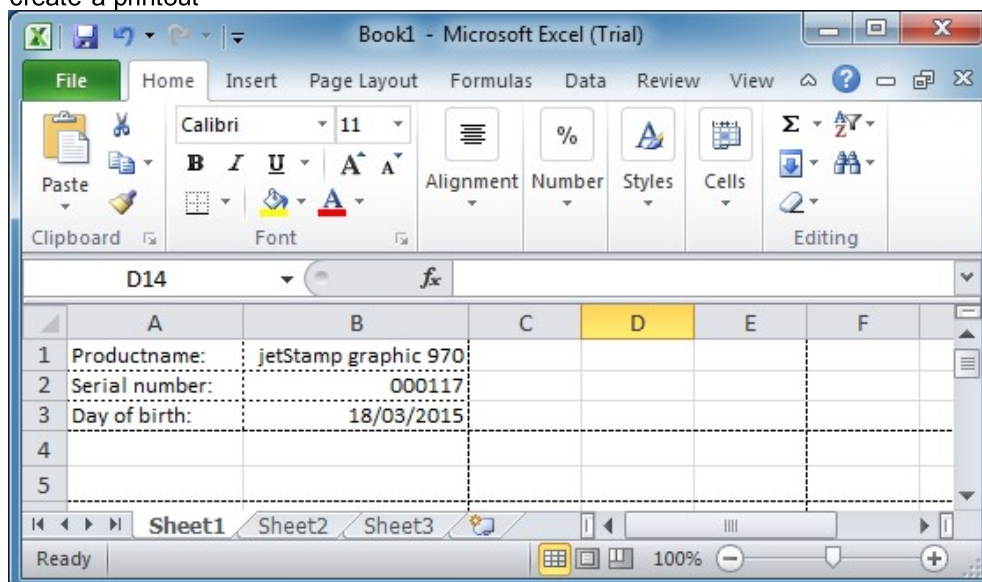
After that, go to “userdefined borders...”



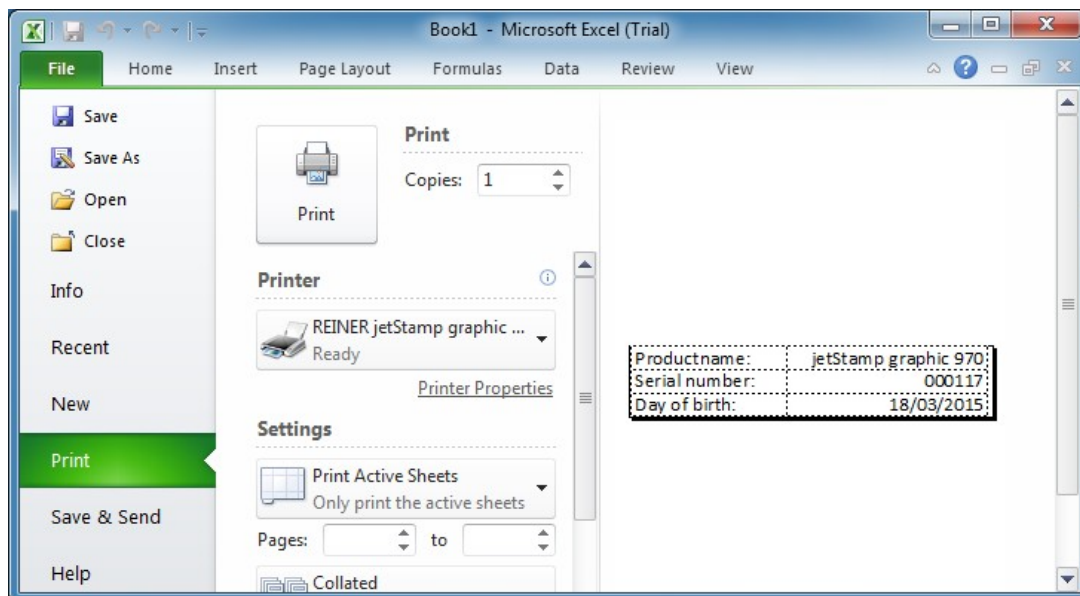
To use the full print area of the REINER jetStamp you must set the Margins to 0. If you are using margins be aware that the summary of them are not bigger than the print area.



create a printout



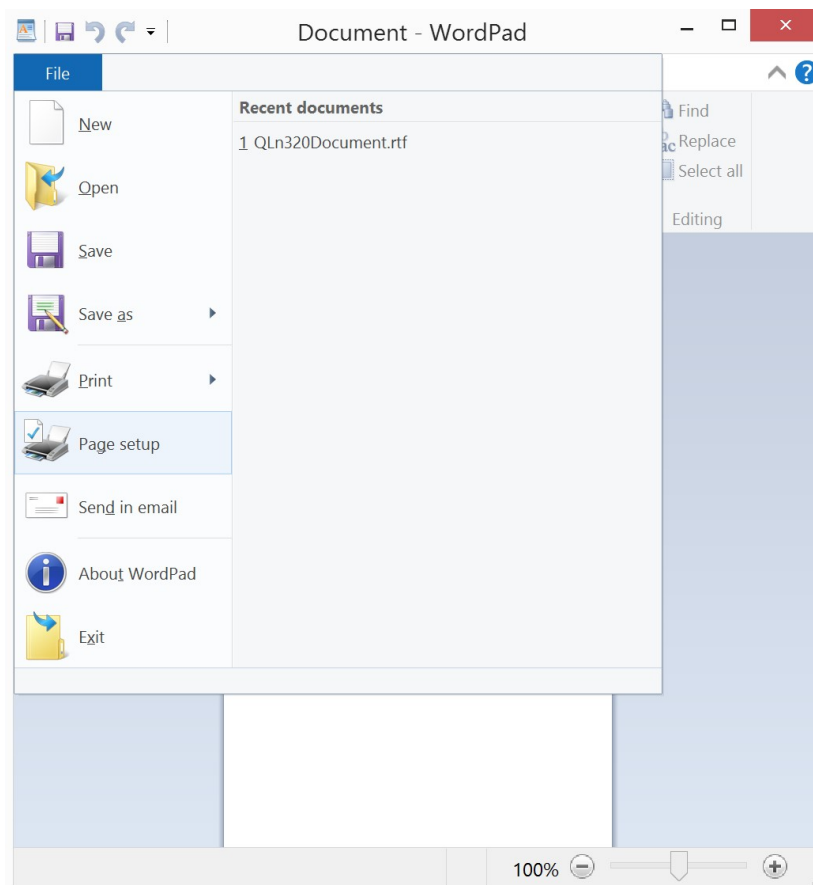
and go after that to File → Print

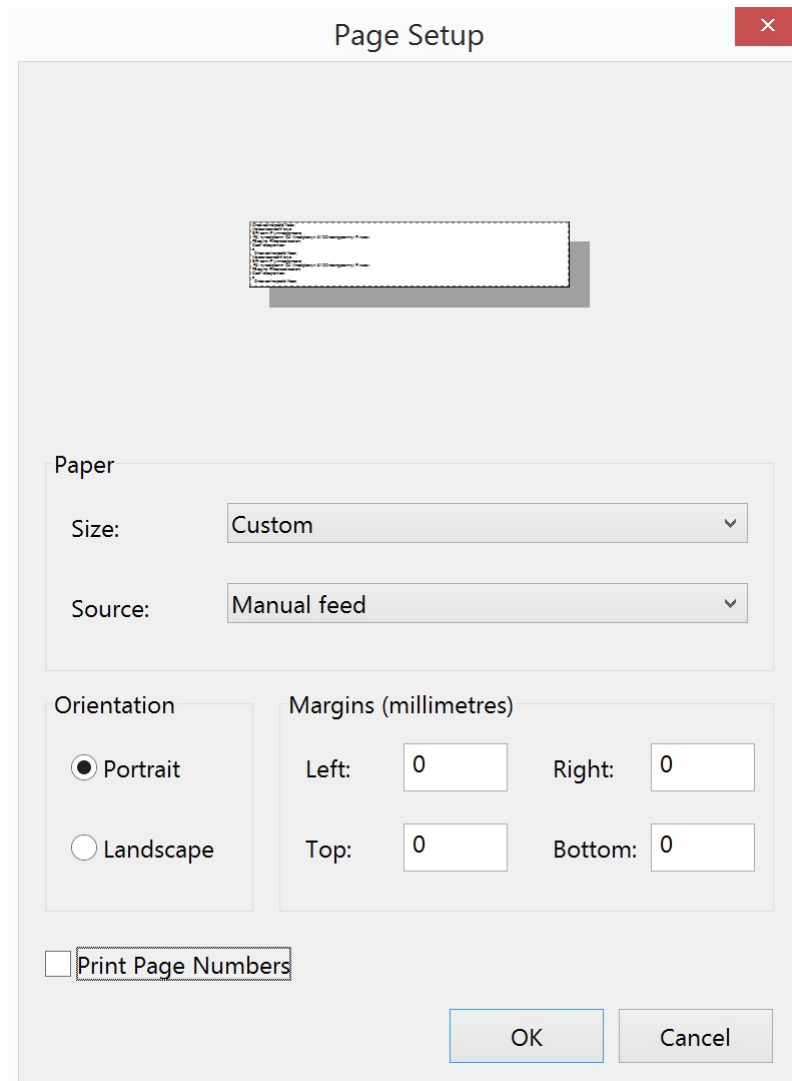


to send the print data to printer.

d. Printing with WordPad

In WordPad, at first select the right printer in File → Print.
After that setup the page as follow:





Page Setup

Paper

Size: Custom

Source: Manual feed

Orientation

☒ Portrait

☐ Landscape

Margins (millimetres)

Left: 0 Right: 0

Top: 0 Bottom: 0

☐ Print Page Numbers

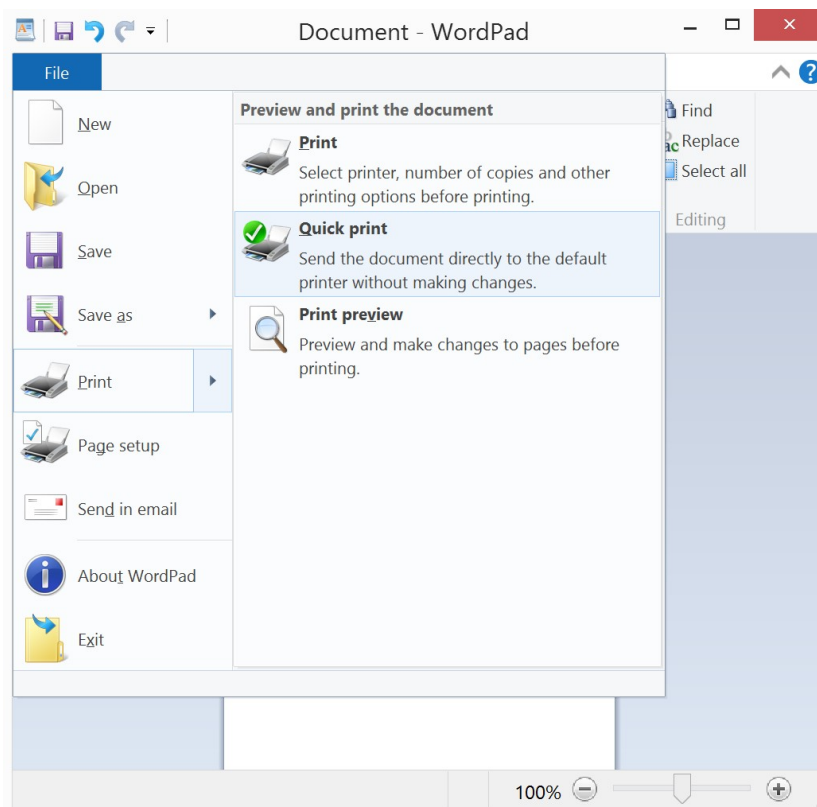
OK Cancel

Insert a text.

Note: The height of the print area is limited.

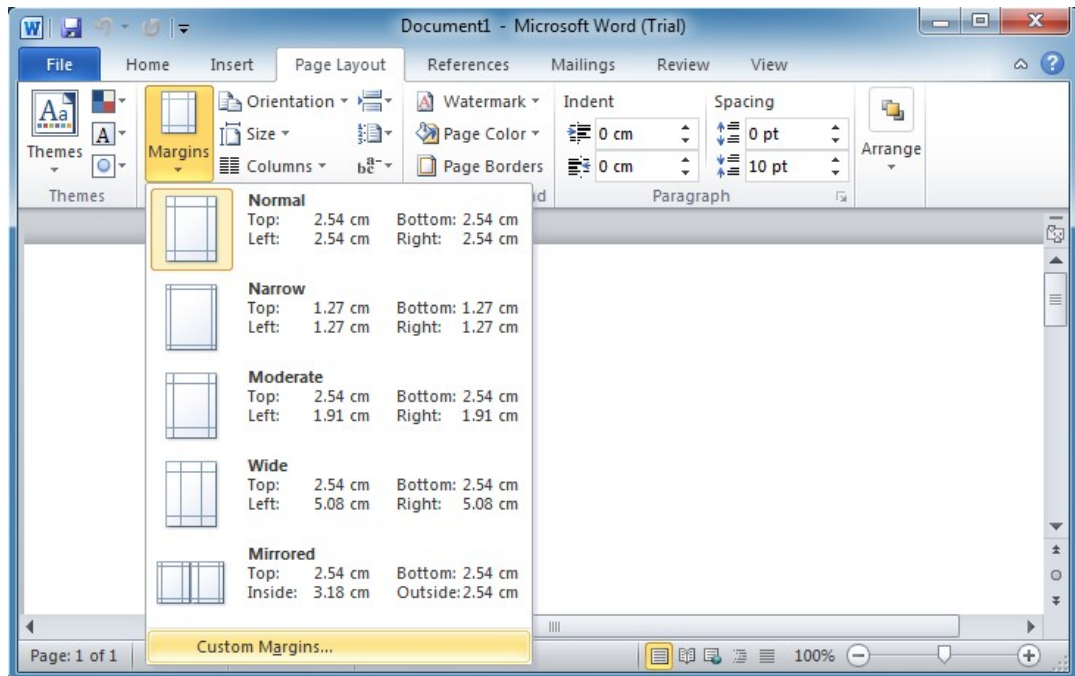
To use the full print area of the REINER jetStamp you must set the Margins to 0. If you are using margins be aware that the summary of them are not bigger than the print area.

To print the document, go to File → Print, or File → Quick print.

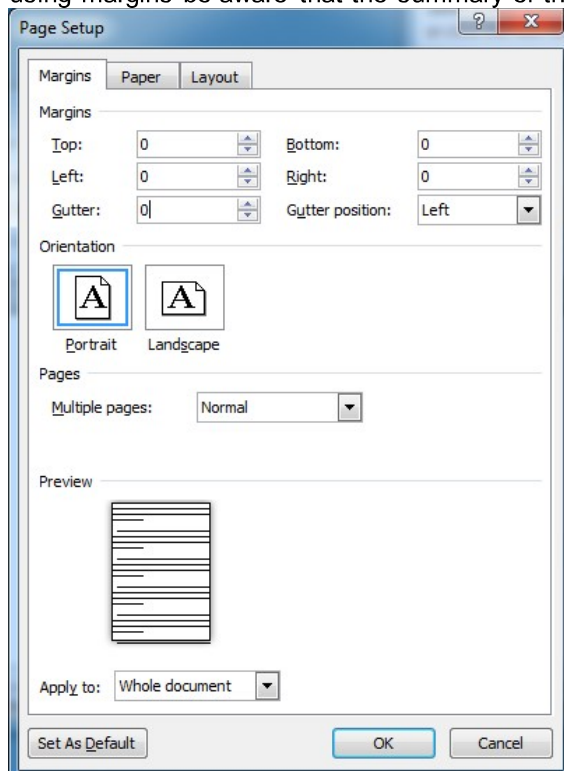


e. Printing with Word

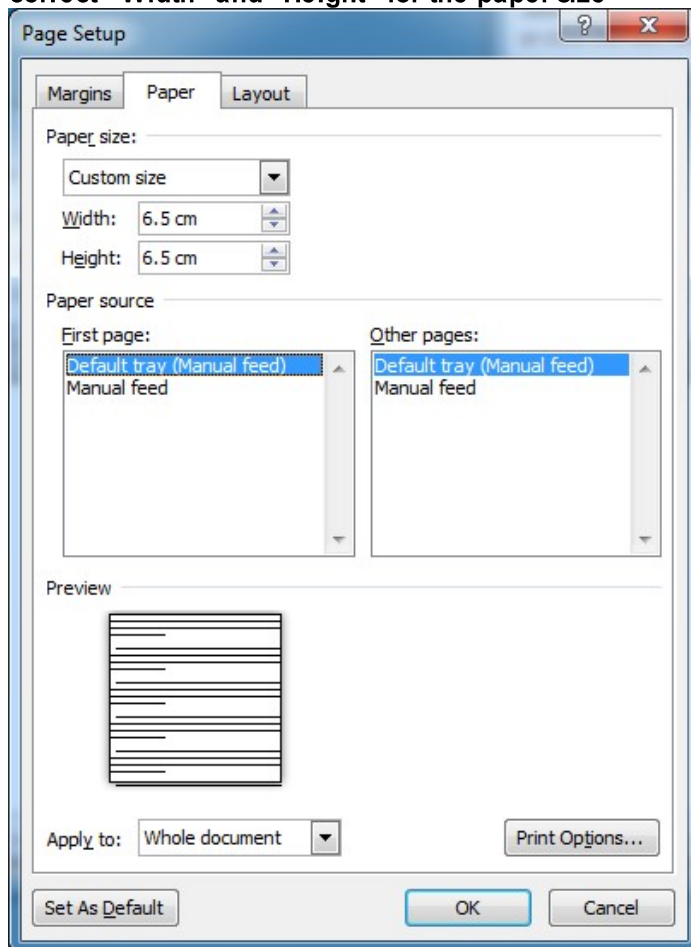
In Word, at first select the right printer in File → Print.
After that, go to “userdefined borders...”



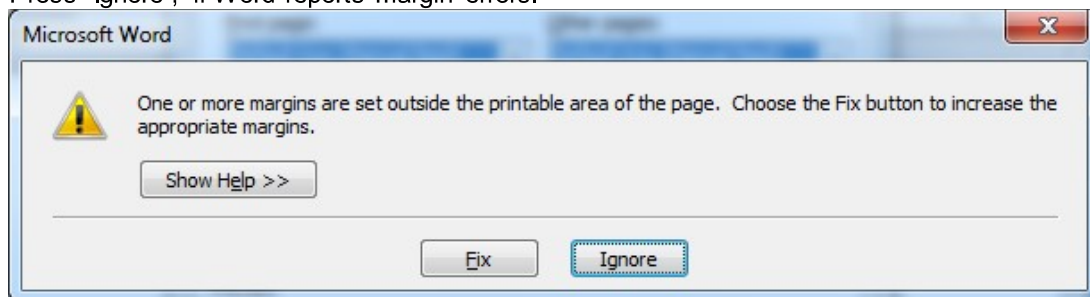
To use the full print area of the REINER jetStamp you must set the Margins to 0. If you are using margins be aware that the summary of them are not bigger than the print area.



Note: Please refer to “Basics about the supported REINER Marker” for choosing the correct “Width” and “Height” for the paper size

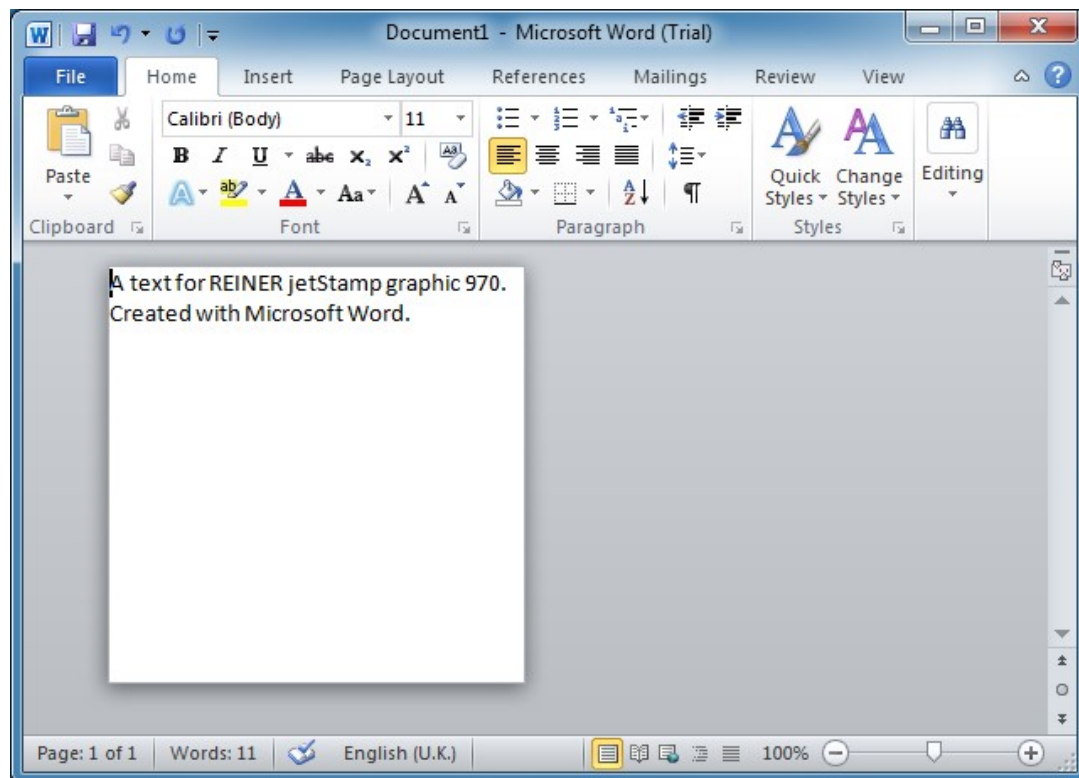


Press “Ignore”, if Word reports margin errors.

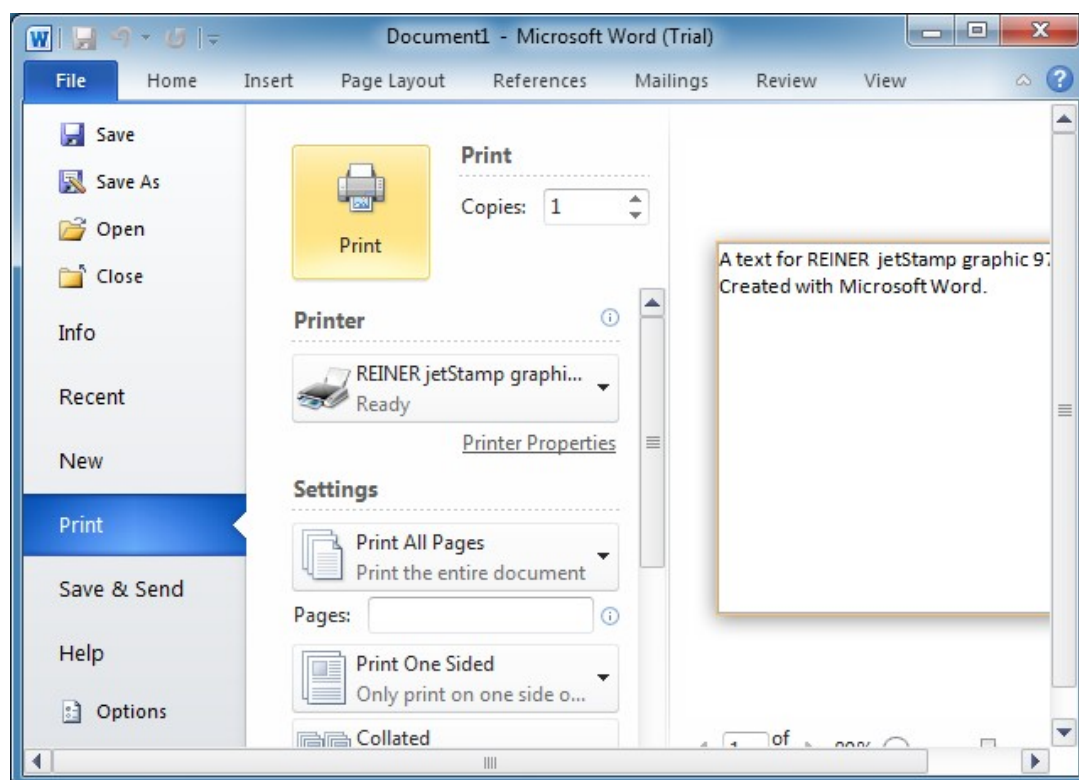


Insert a text.

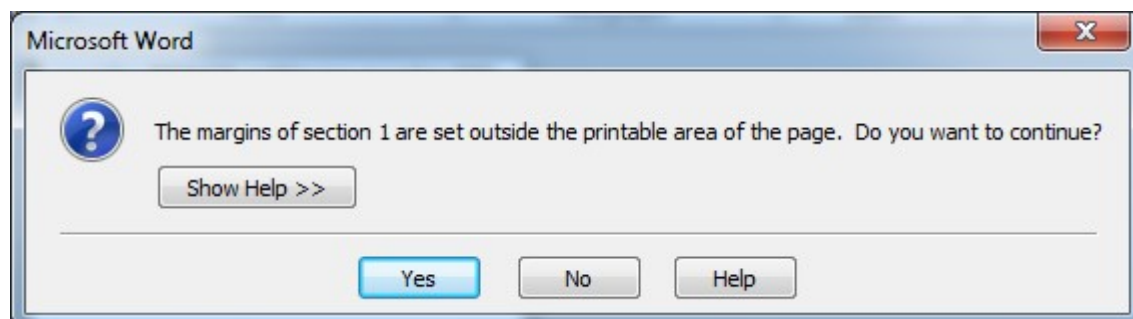
Note: The height of the print area is limited.



To print the document, go to File → Print and press “Print”.

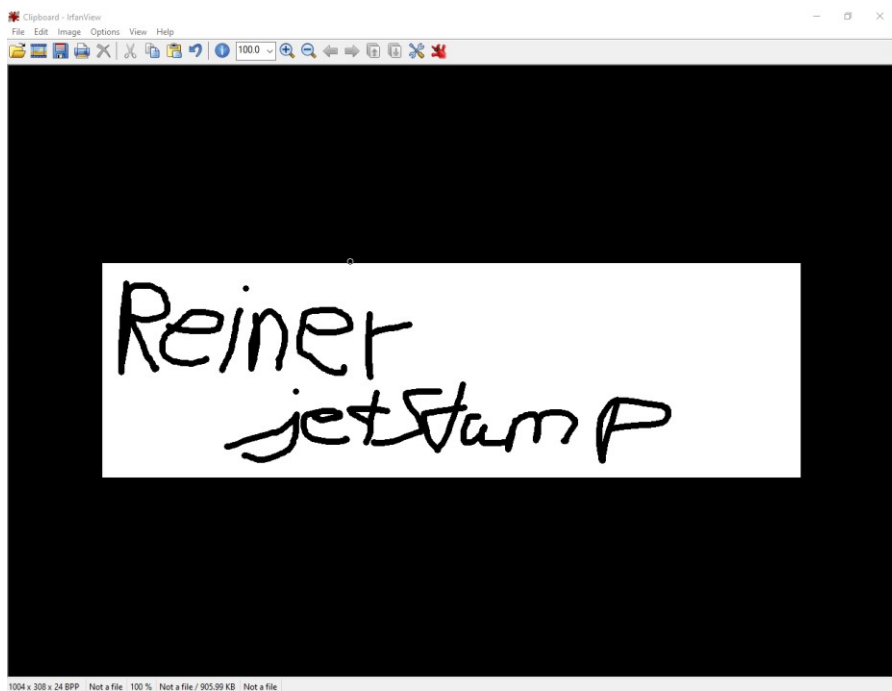
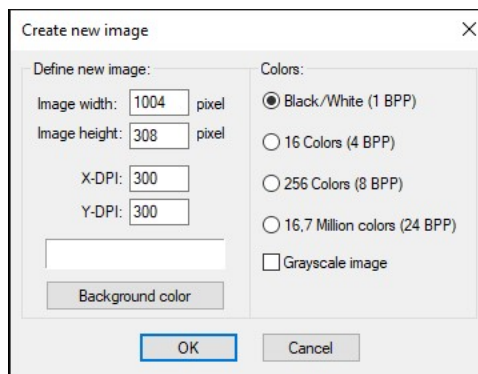
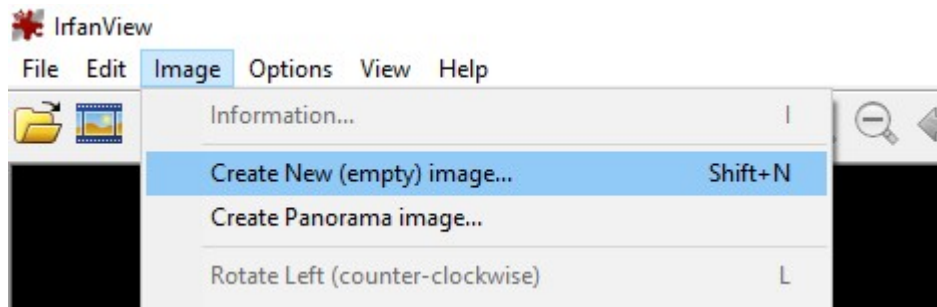


Click button **Yes** if Word asks to continue.



f. Printing with IrfanView

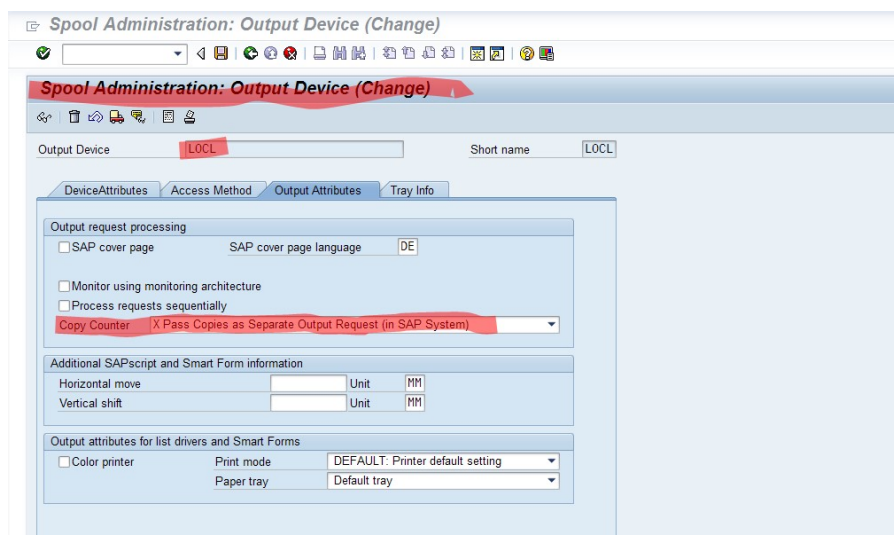
Example for the REINER jetStamp 1025



g. Printing with SAP

Used SAP transaction “spad”

Setting Copy Counter to „X Pass Copies as Seperate Output Request (in SAP System)

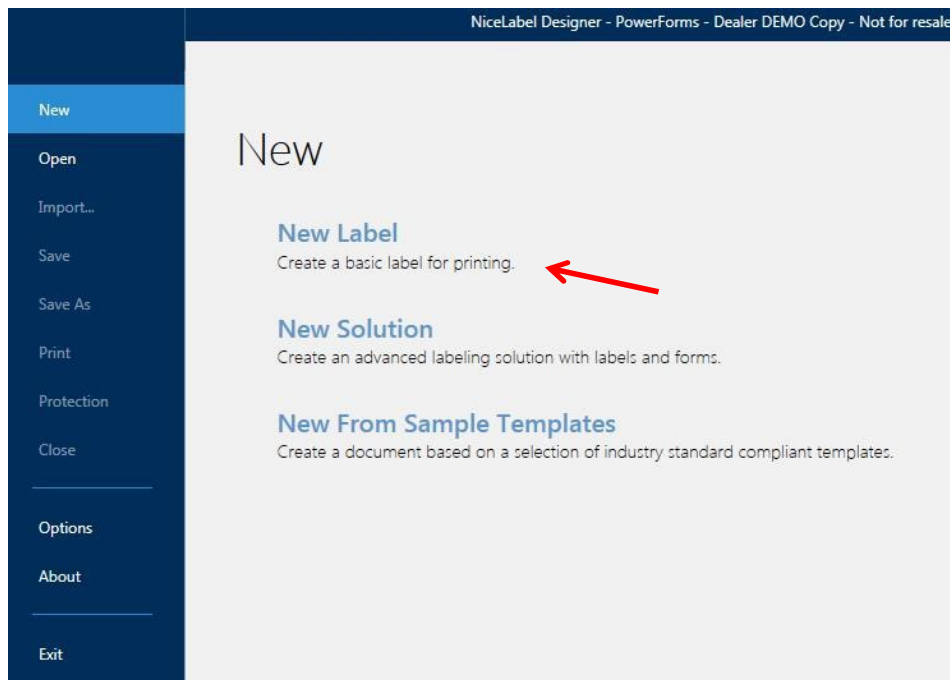


8. Use printer driver with extended functions

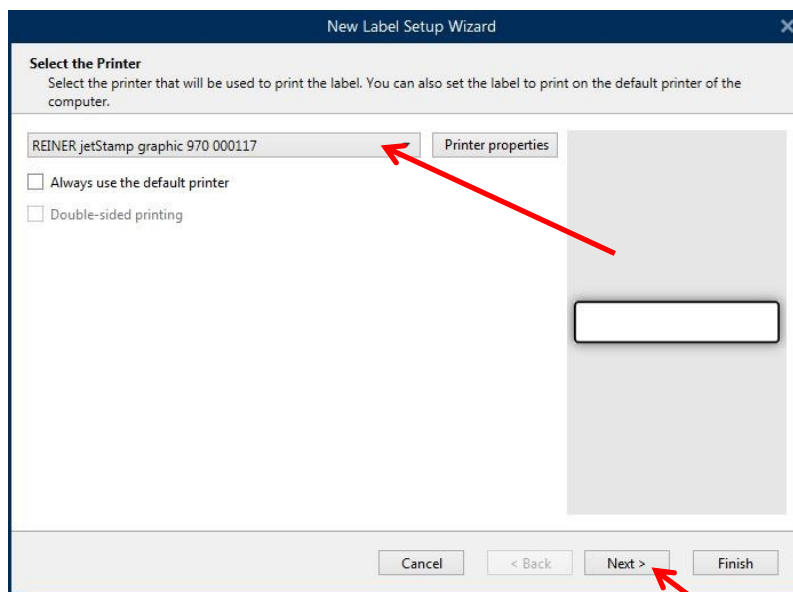
Printer driver supports also device internal functions like Counter, Date/Time or variable Barcode. These special functions are only accessible with NiceLabel Software.

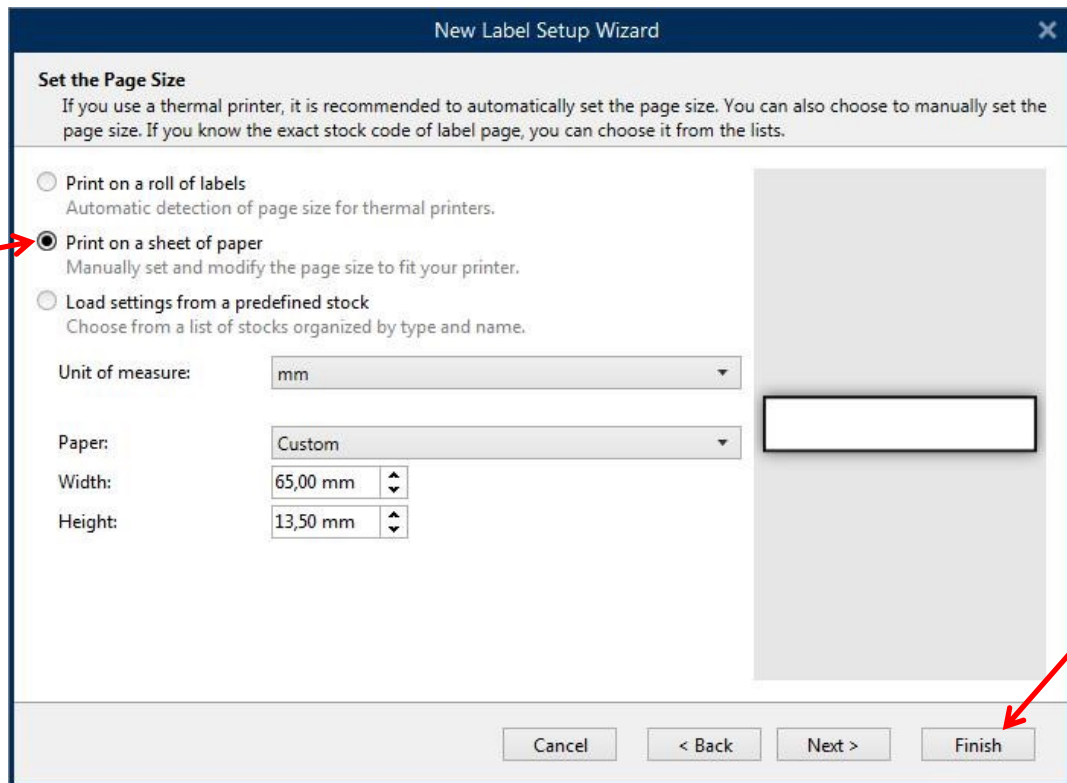
The following steps are done with Software NiceLabel Designer Pro.

a. Create and print simple Label



Select correct printer





The image shows a 'New Label Setup Wizard' dialog box. It has a title bar with a close button (X). The main content area is titled 'Set the Page Size' and contains a paragraph of instructions. Below this are three radio button options: 'Print on a roll of labels', 'Print on a sheet of paper' (which is selected and pointed to by a red arrow), and 'Load settings from a predefined stock'. To the right of these options is a large gray rectangular area representing a label, with a white rectangular box in the center. Below the radio buttons are three rows of settings: 'Unit of measure:' with a dropdown menu set to 'mm'; 'Paper:' with a dropdown menu set to 'Custom'; and 'Width:' and 'Height:' with input fields showing '65,00 mm' and '13,50 mm' respectively, each with up and down arrow buttons. At the bottom of the dialog are four buttons: 'Cancel', '< Back', 'Next >', and 'Finish' (which is pointed to by a red arrow).

New Label Setup Wizard

Set the Page Size
If you use a thermal printer, it is recommended to automatically set the page size. You can also choose to manually set the page size. If you know the exact stock code of label page, you can choose it from the lists.

☐ Print on a roll of labels
Automatic detection of page size for thermal printers.

☒ Print on a sheet of paper
Manually set and modify the page size to fit your printer.

☐ Load settings from a predefined stock
Choose from a list of stocks organized by type and name.

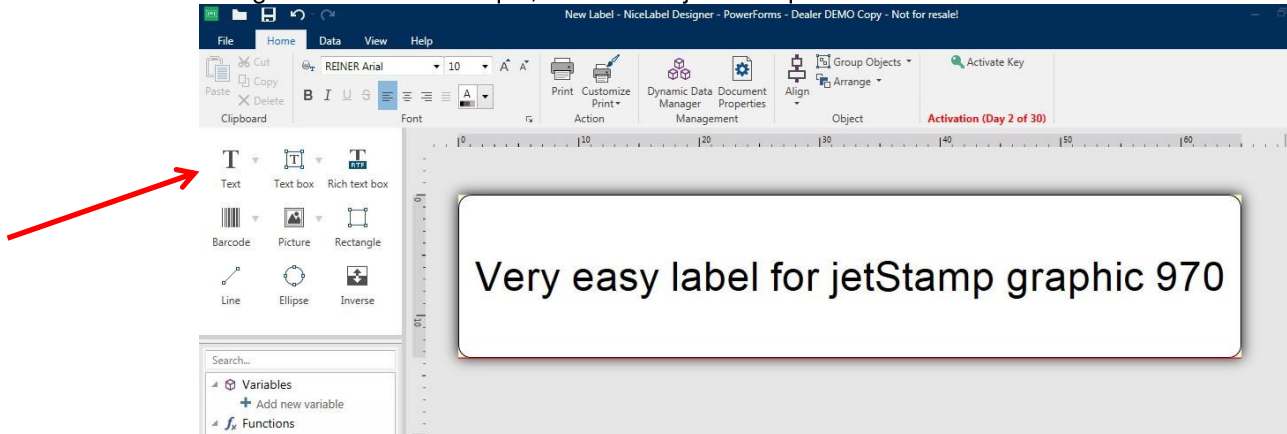
Unit of measure:

Paper:

Width:

Height:

Design a label. For example, use Text object and put a text into label.

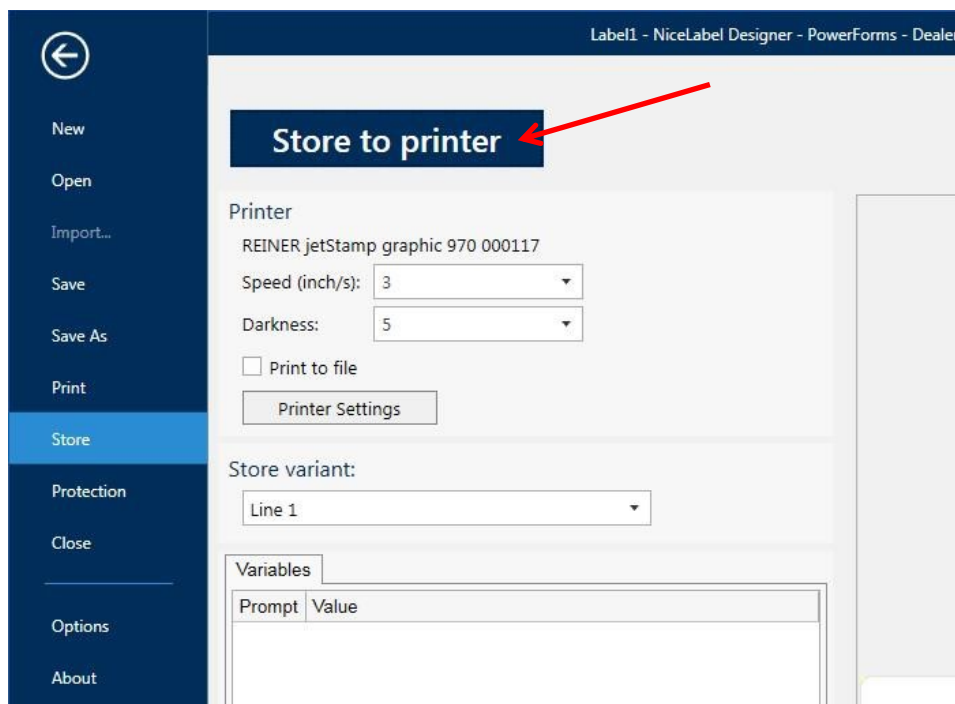


Store label to printer into nonvolatile memory

Note:

In case of USB connection turn set wheel to position **1**.

In case of Bluetooth connection turn set wheel to position **Online/Bluetooth**



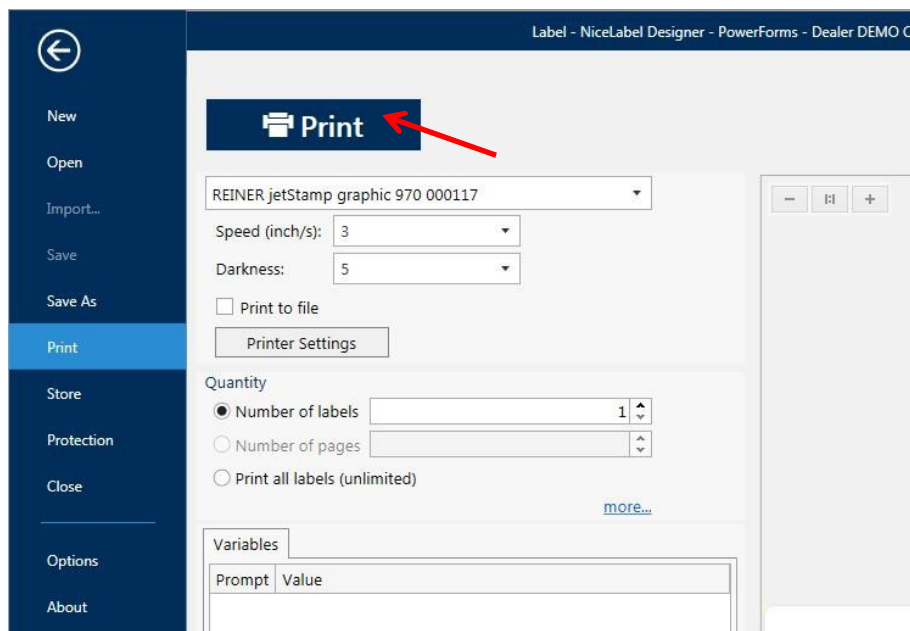
Note:

The stored label can only printed when set wheel of device is on position **1**. The label can be printed as often as desired.

Store label to printer into volatile memory

Note:

In case of USB and Bluetooth connection, turn set wheel to position **Online/Bluetooth**



Note:

The transferred label can only be printed when set wheel of device is on position **Online/Bluetooth**. The label can only be printed once.

b. Create and print difficult label with Counter, Date/Time and variable Barcode

Open NiceLabel Pro and open new label as shown in chapter above.


Select general font which will be used for all text based object like Text, Counter or Date. The font can be changed in the properties of each object.

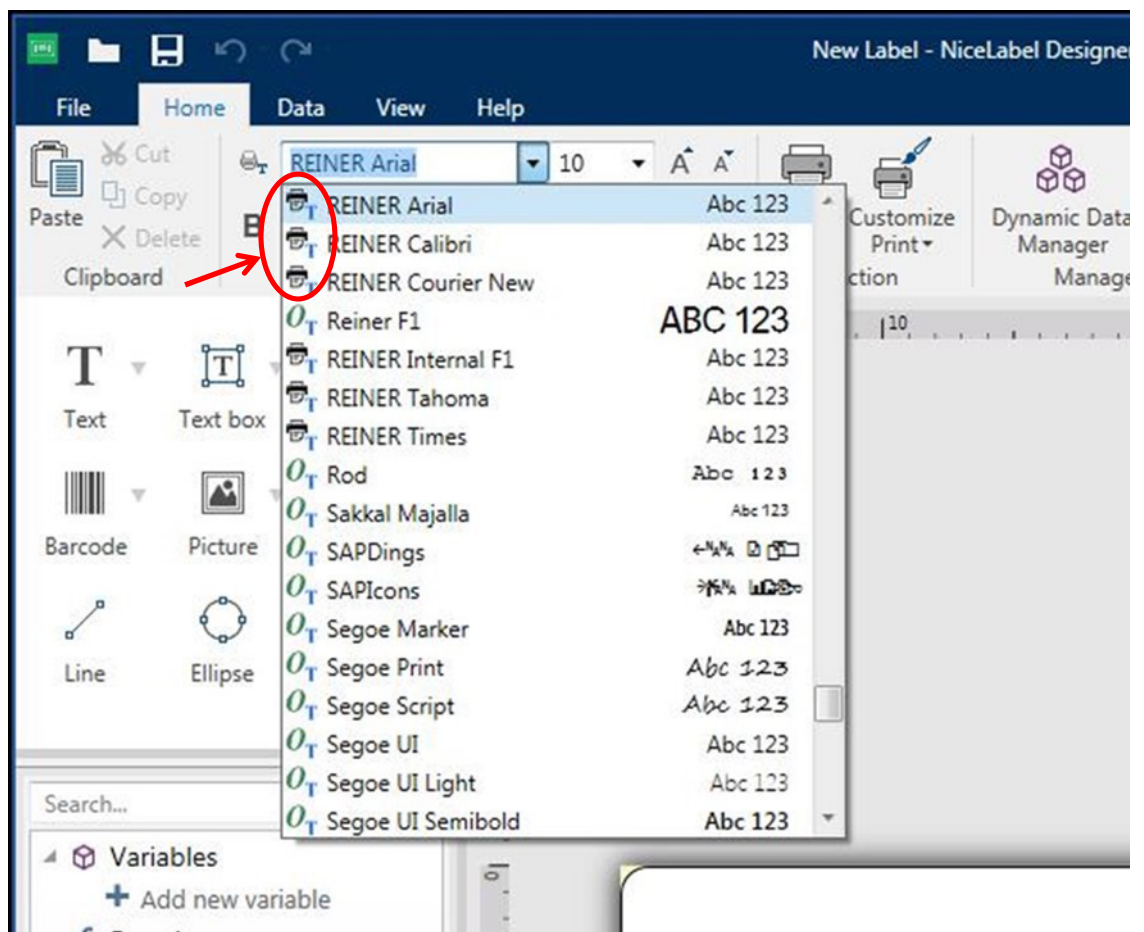
Note: There are only two different fonts per label allowed.

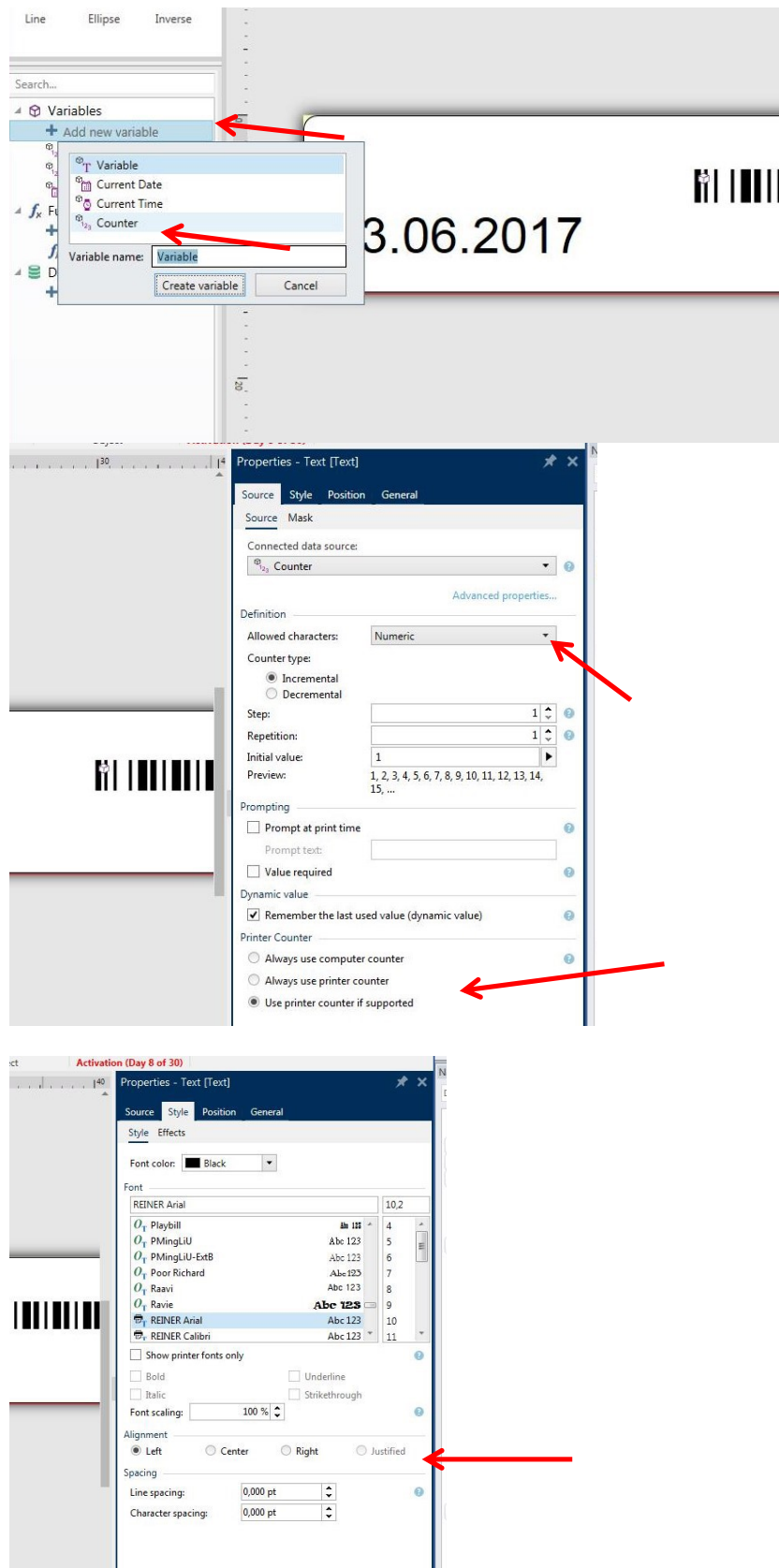


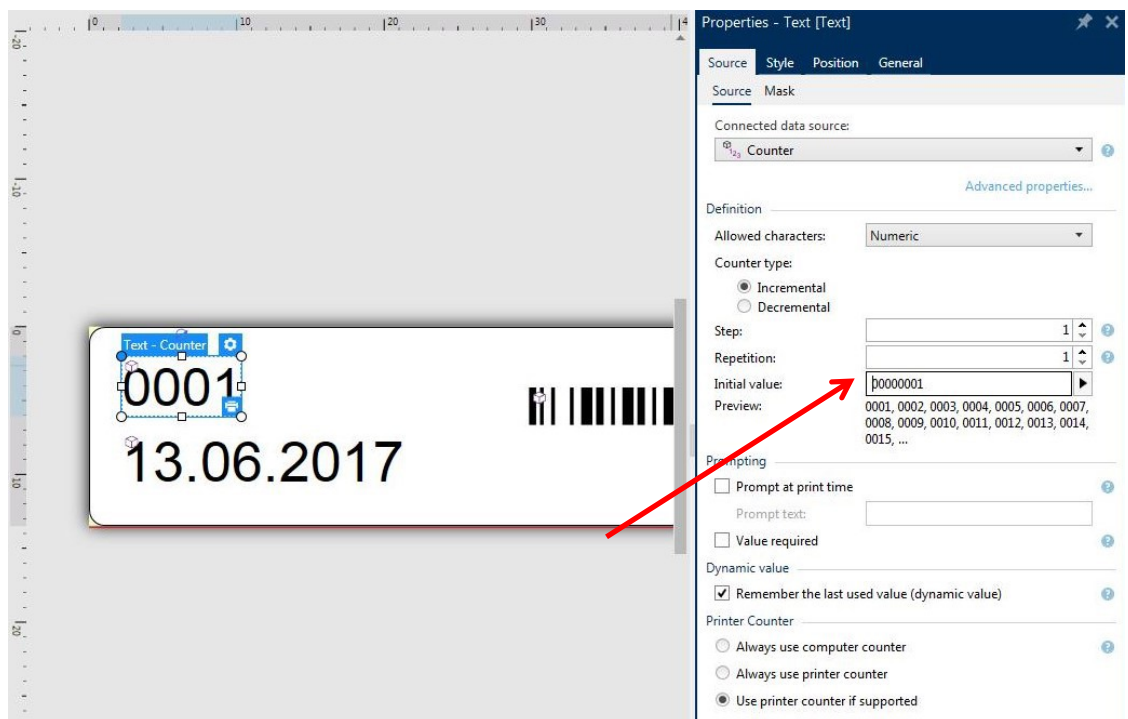
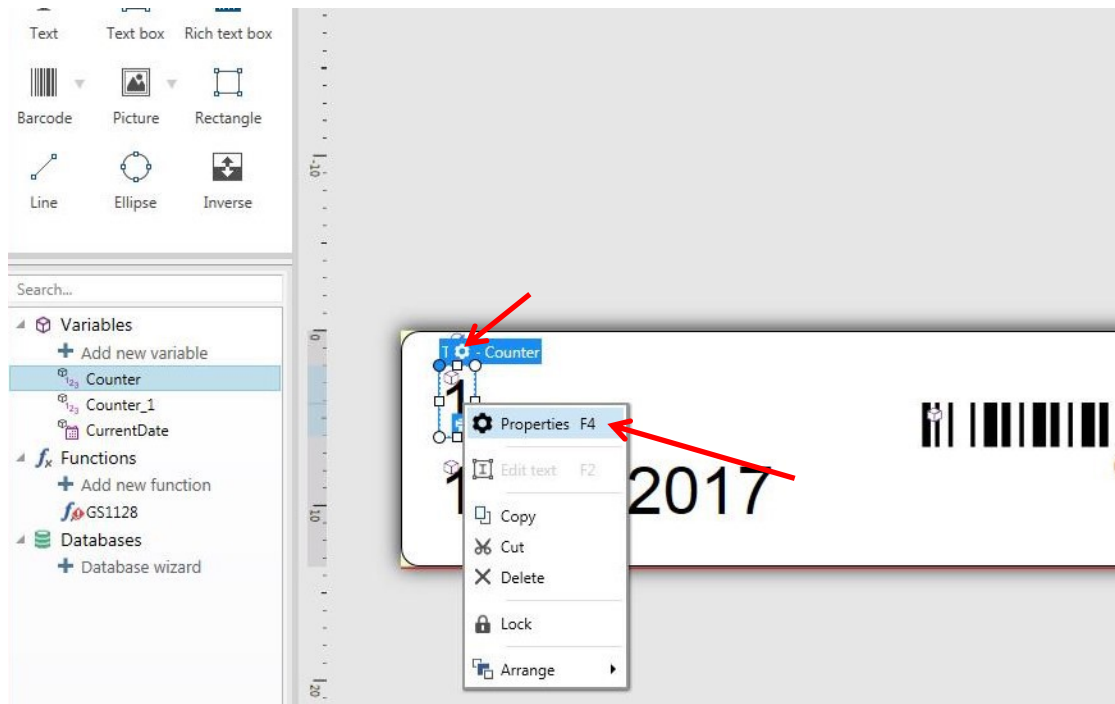
Note: Only the fonts with printer symbol () in front can be used for counter and date/time objects.



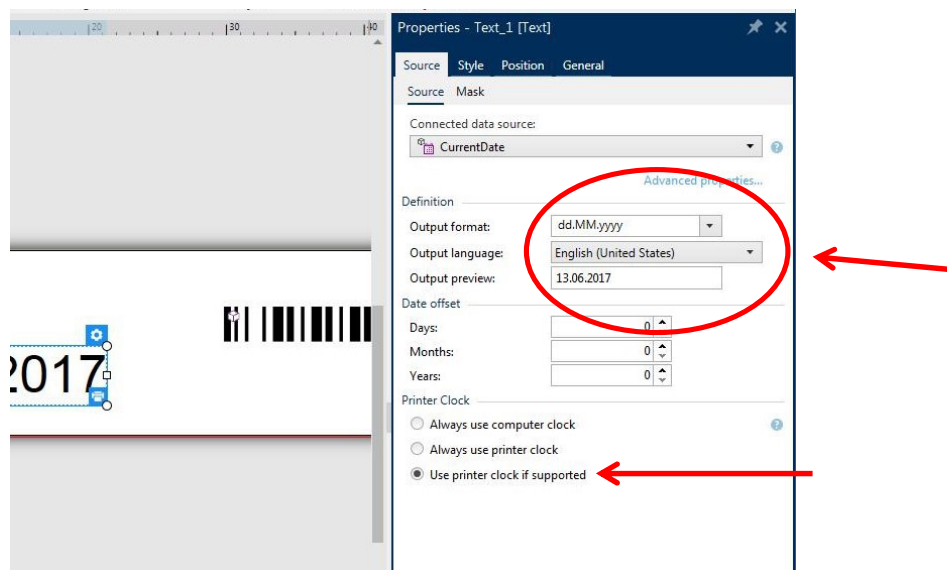
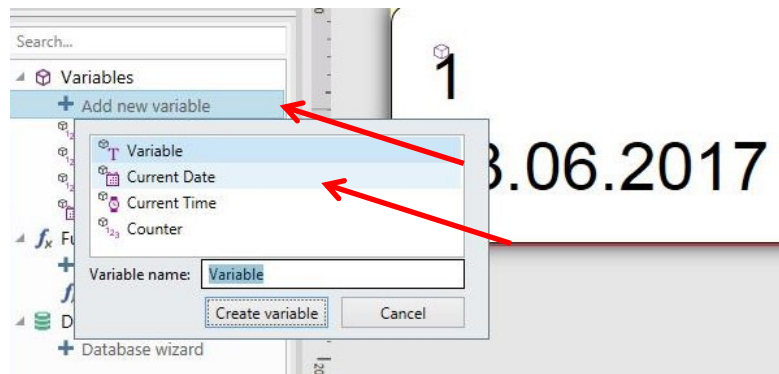
Note: Ensure that printer () are enabled fonts



Insert a Counter as follow



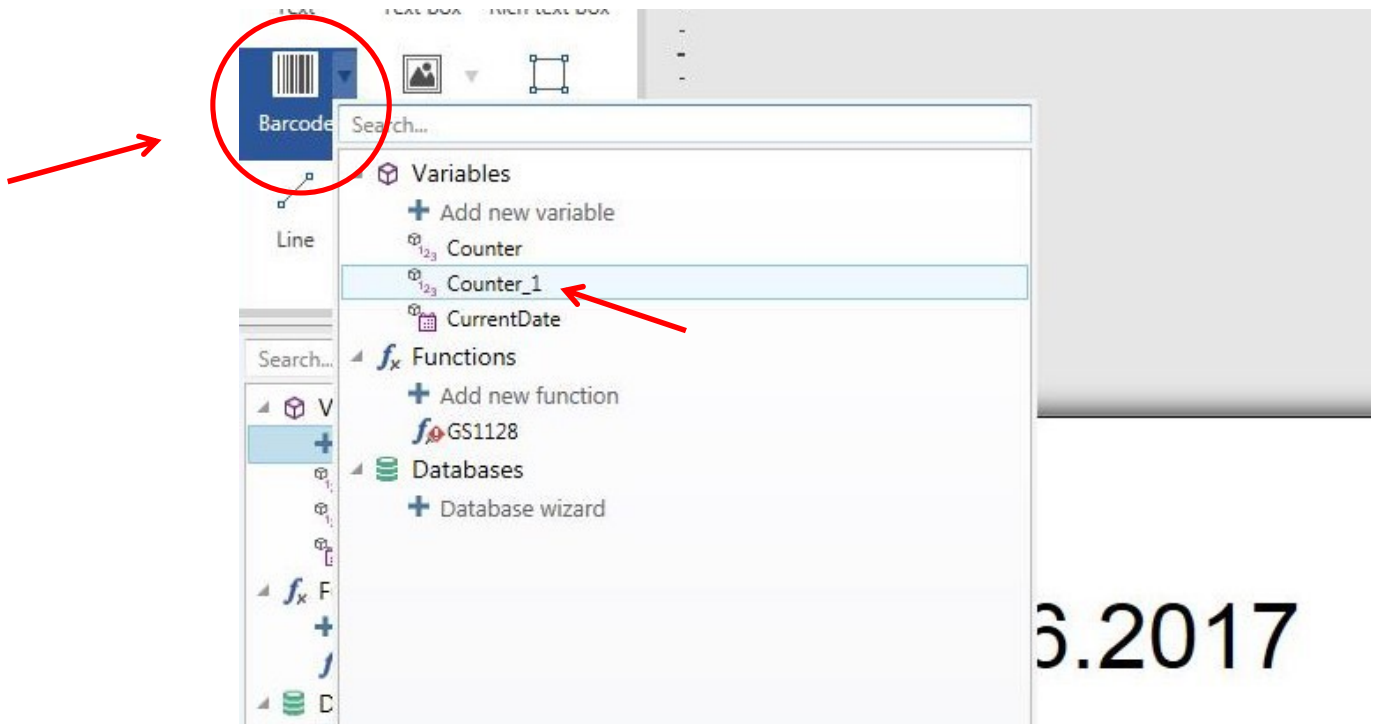
To get a counter with leading zeros type the desired combination in the field initial value.

Insert a date as follow

The format of the date is chosen then the language comes after the output preview.

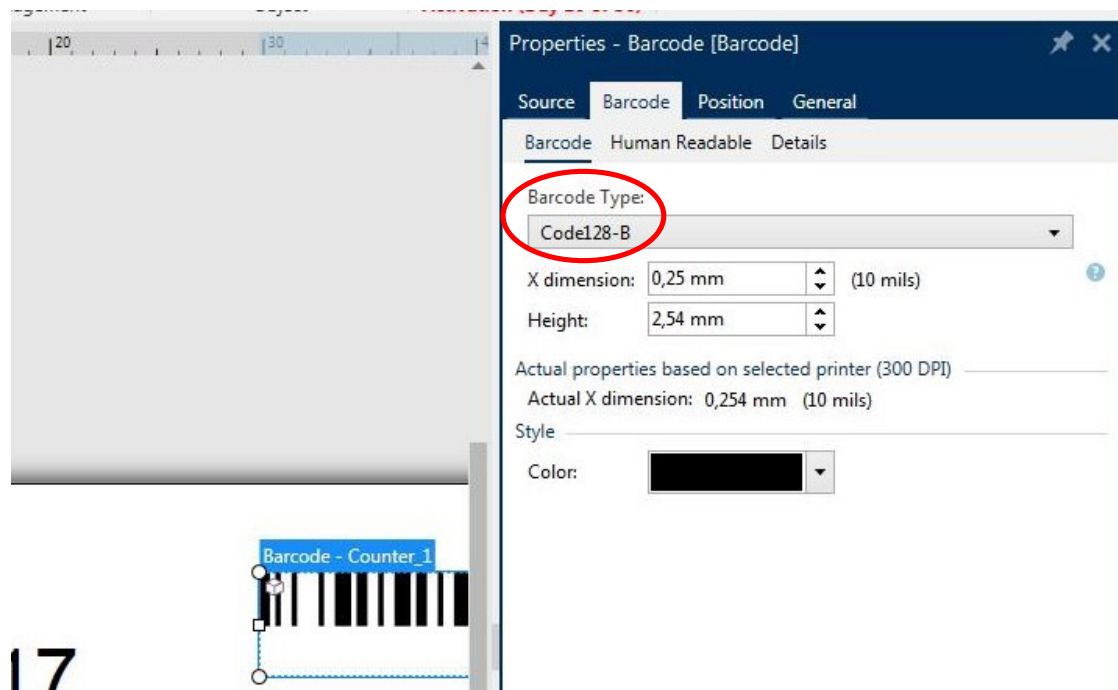
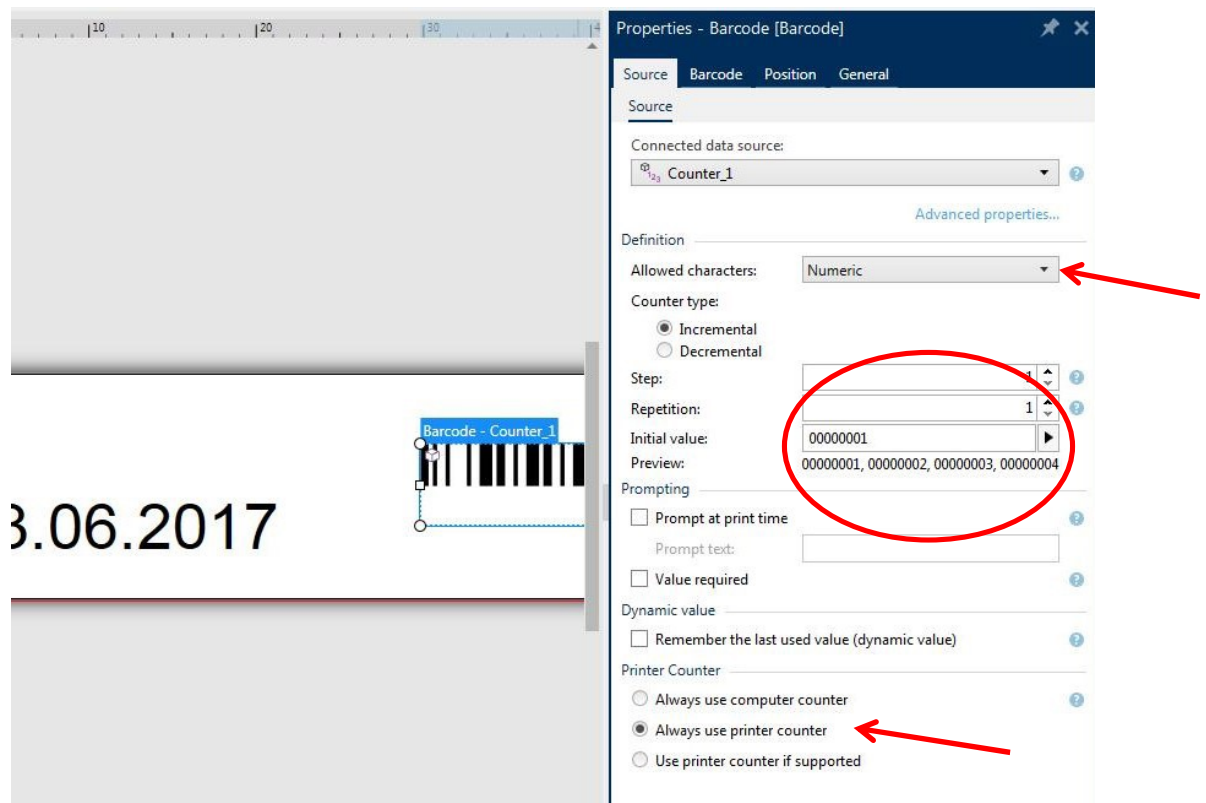


Insert a barcode with included counter as follow

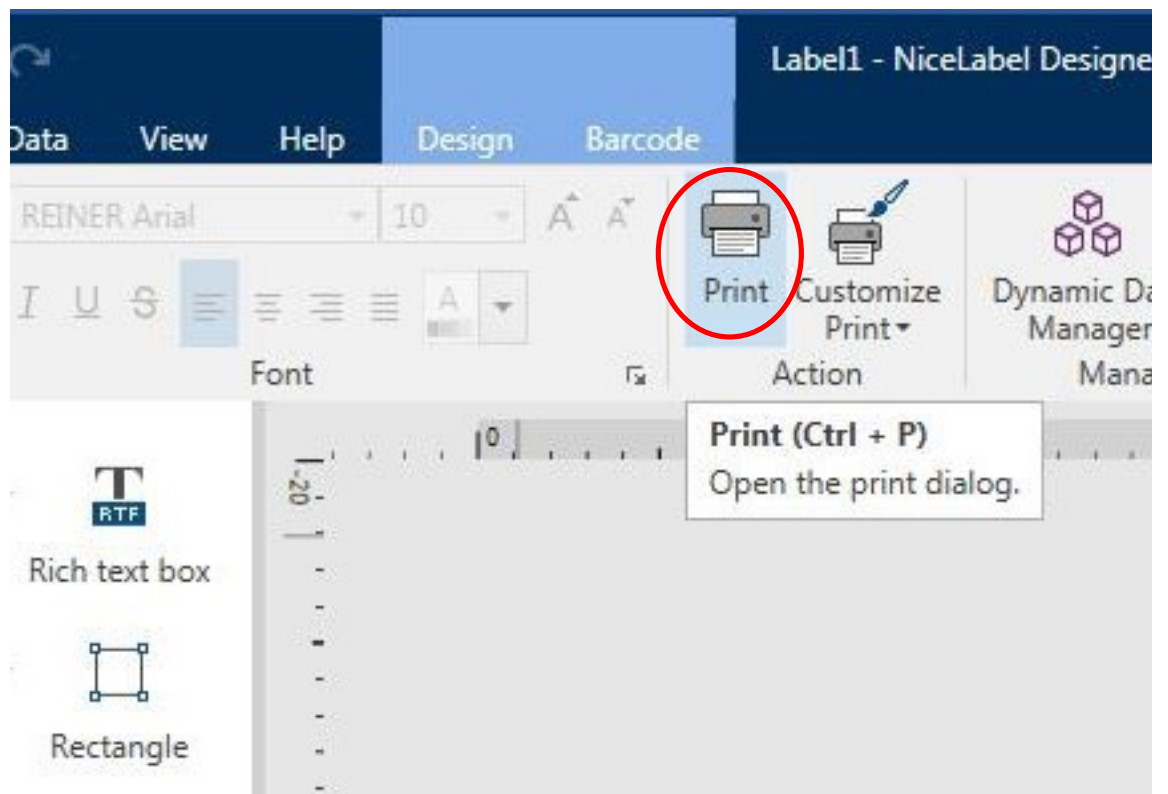
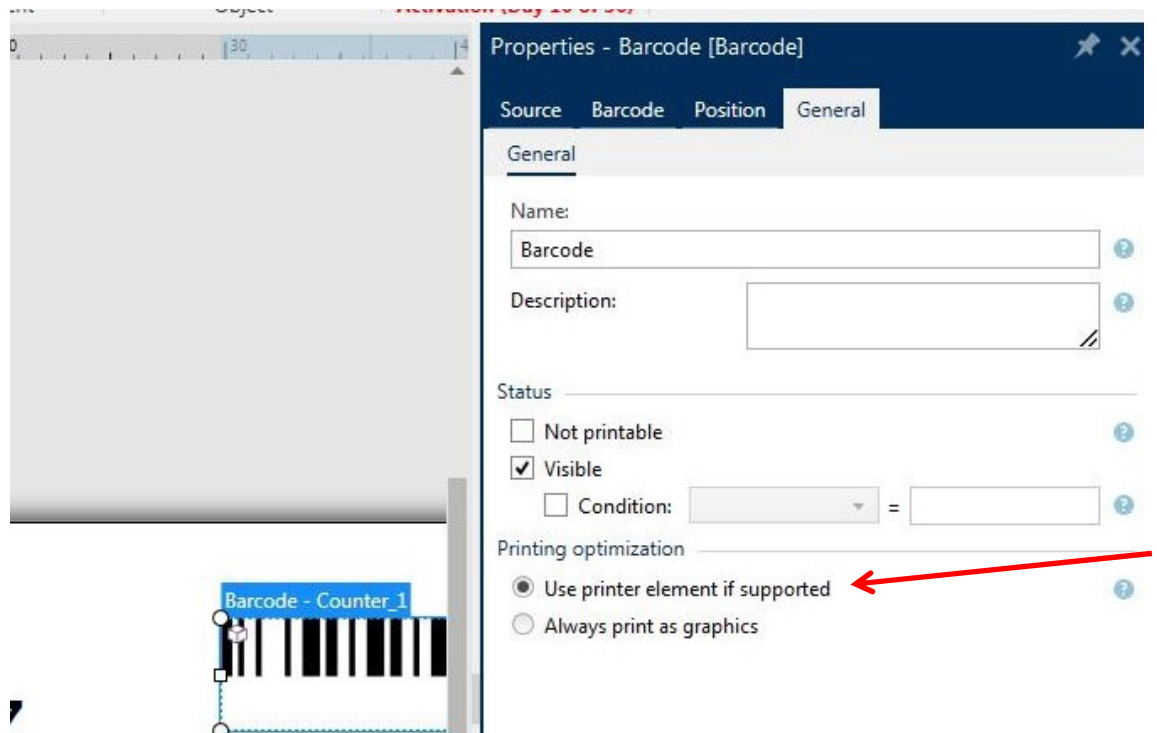


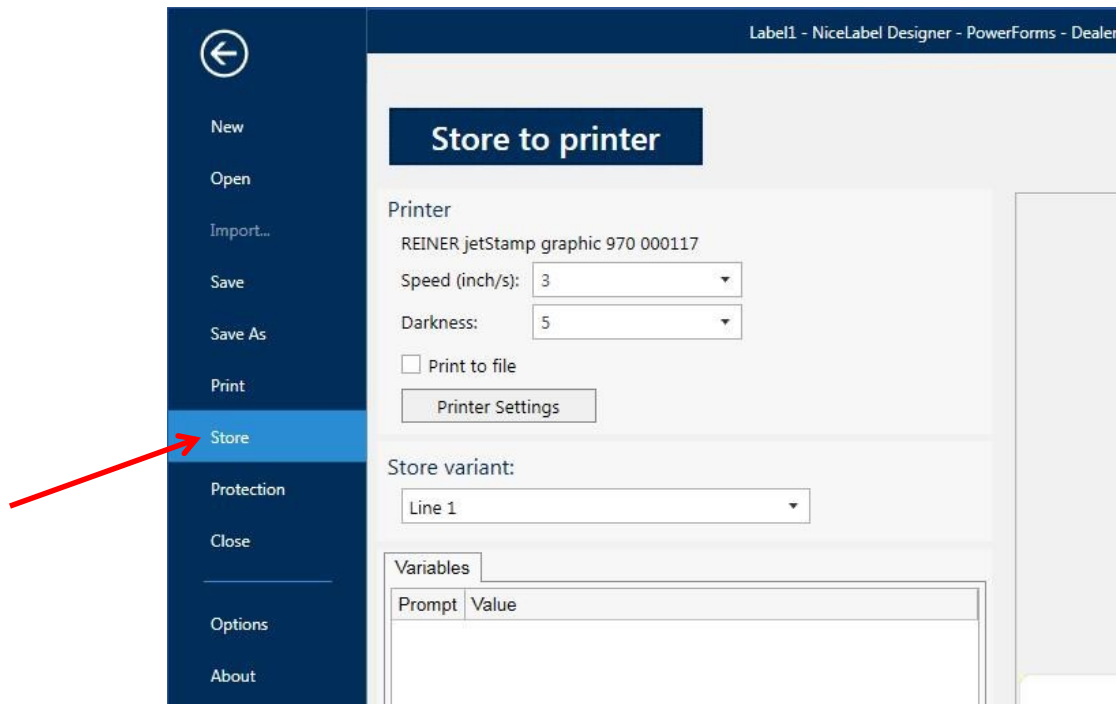
Right click on barcode object, and select Properties.





Note: Only Bar code type Code128-B, Code39 and Interleaved 2/5 are valid for variable Barcodes





Turn set wheel to position 1



The result:

